

Step 01

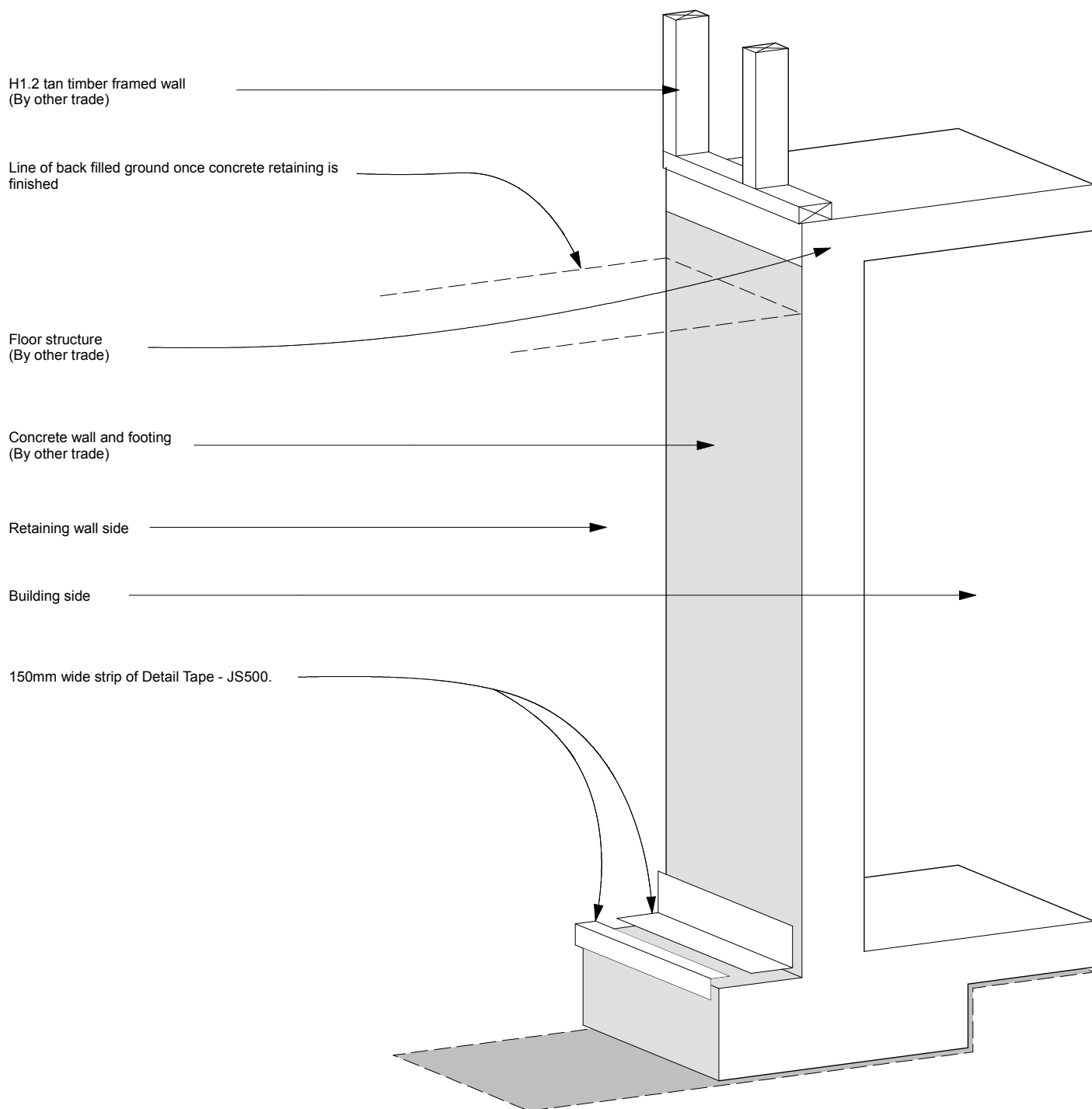
Note:
Protecto Wrap products are designed to be covered
and are therefore not UV stable - cover within four
weeks of installation.

Concrete Retaining Wall
Protecto Wall - JS140/60 / Detail tape - JS500
Protecto Tape - EIFS Tape

Technical specification subject to change without notice

CAD Ref: PW06.8
Date : June 2009
Revision :

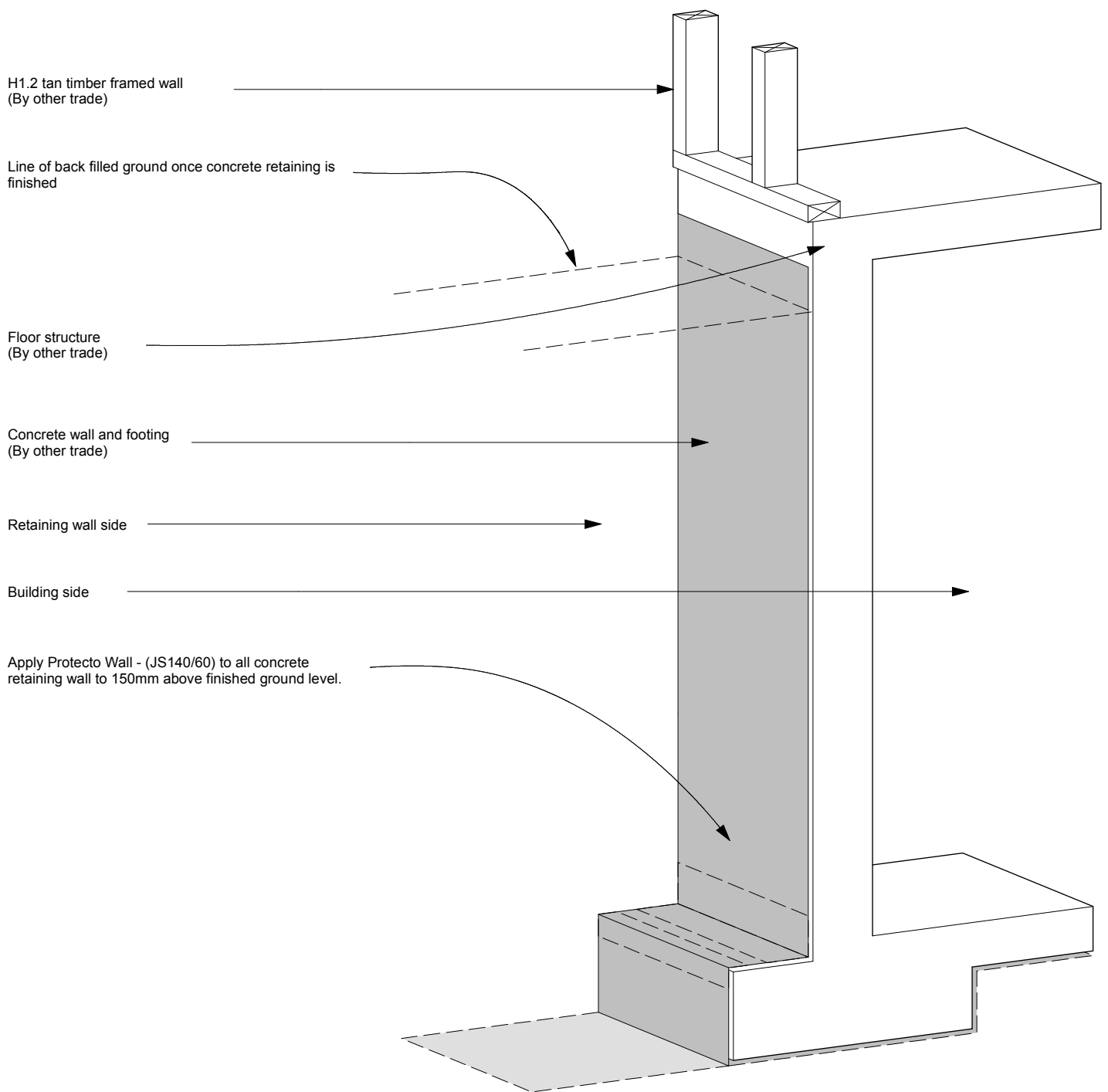
Sheet :
07.1.3



Step 02

Note:
 Protecto Wrap products are designed to be covered
 and are therefore not UV stable - cover within four
 weeks of installation.

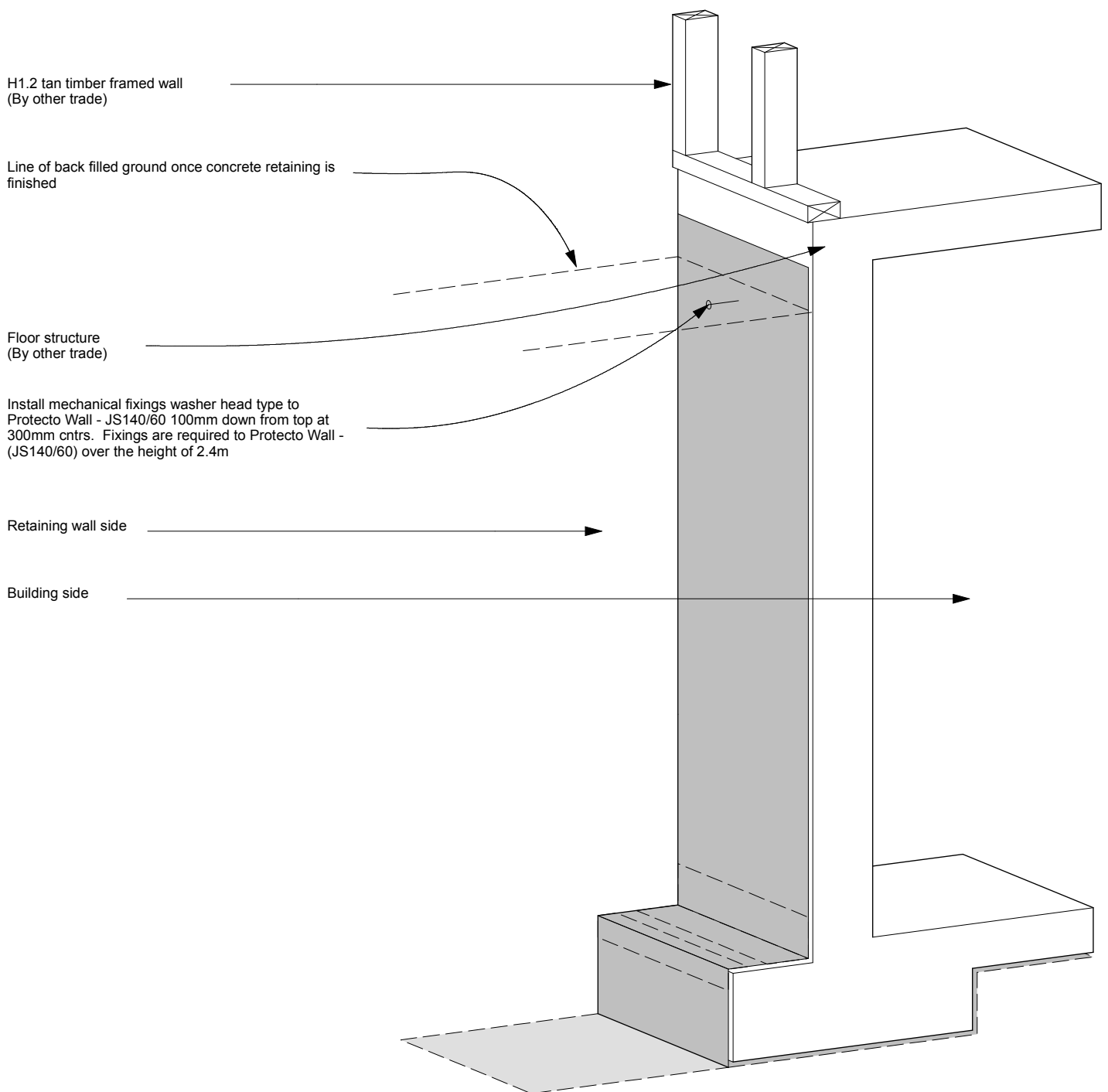
Protecto Wrap Specifiers Guide	Concrete Retaining Wall Protecto Wall - JS140/60 / Detail tape - JS500 Protecto Tape - EIFS Tape <small>Technical specification subject to change without notice</small>	CAD Ref:	PW06.8	Sheet : 07.1.4
		Date :	June 2009	
		Revision :		



Step 03

Note:
Protecto Wrap products are designed to be covered
and are therefore not UV stable - cover within four
weeks of installation.

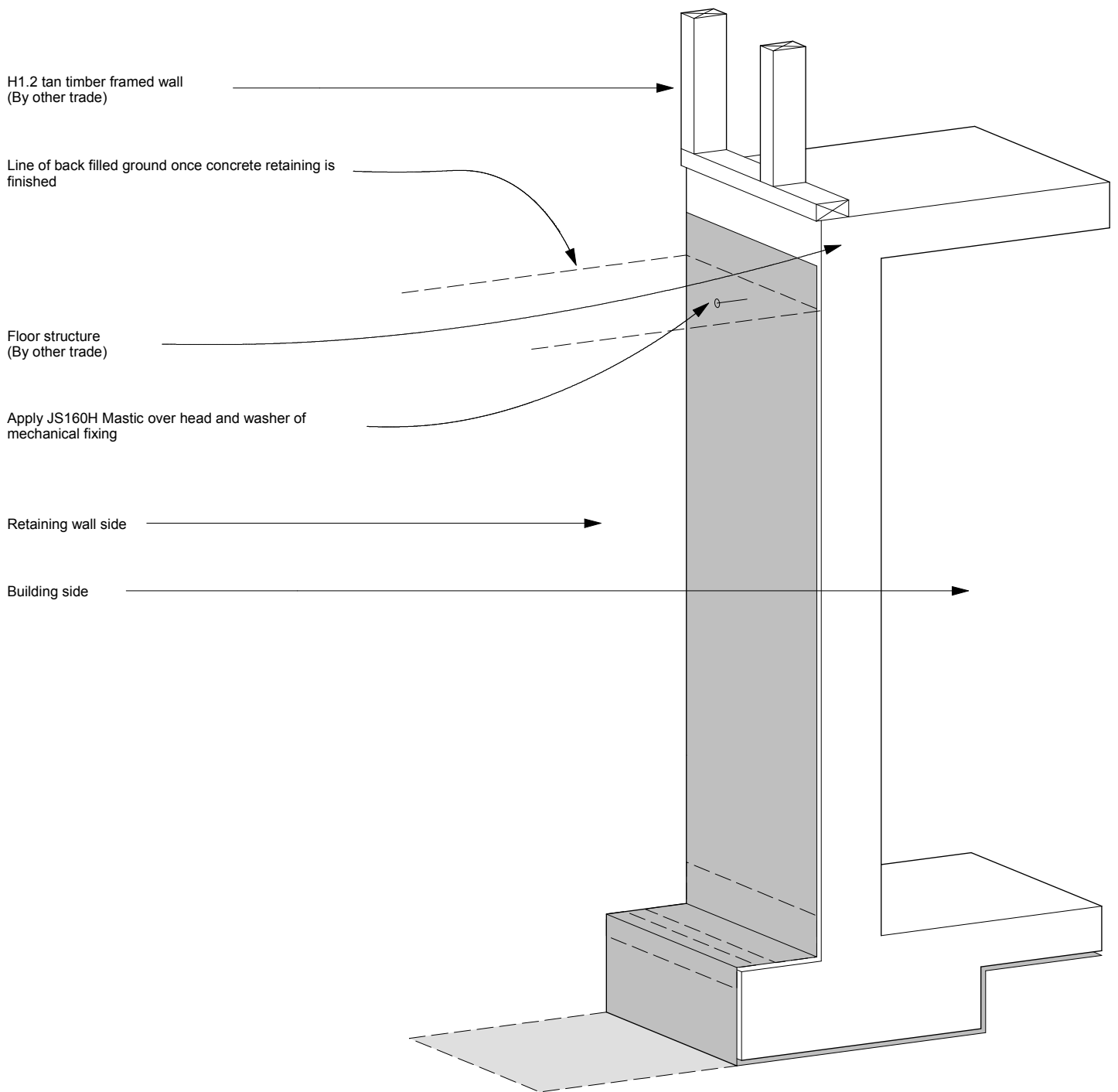
Protecto Wrap Specifiers Guide	Concrete Retaining Wall Protecto Wall - JS140/60 / Detail tape - JS500 Protecto Tape - EIFS Tape <small>Technical specification subject to change without notice</small>	CAD Ref:	PW06.8	Sheet :
		Date :	June 2009	07.1.5
		Revision :		



Step 04

Note:
Protecto Wrap products are designed to be covered
and are therefore not UV stable - cover within four
weeks of installation.

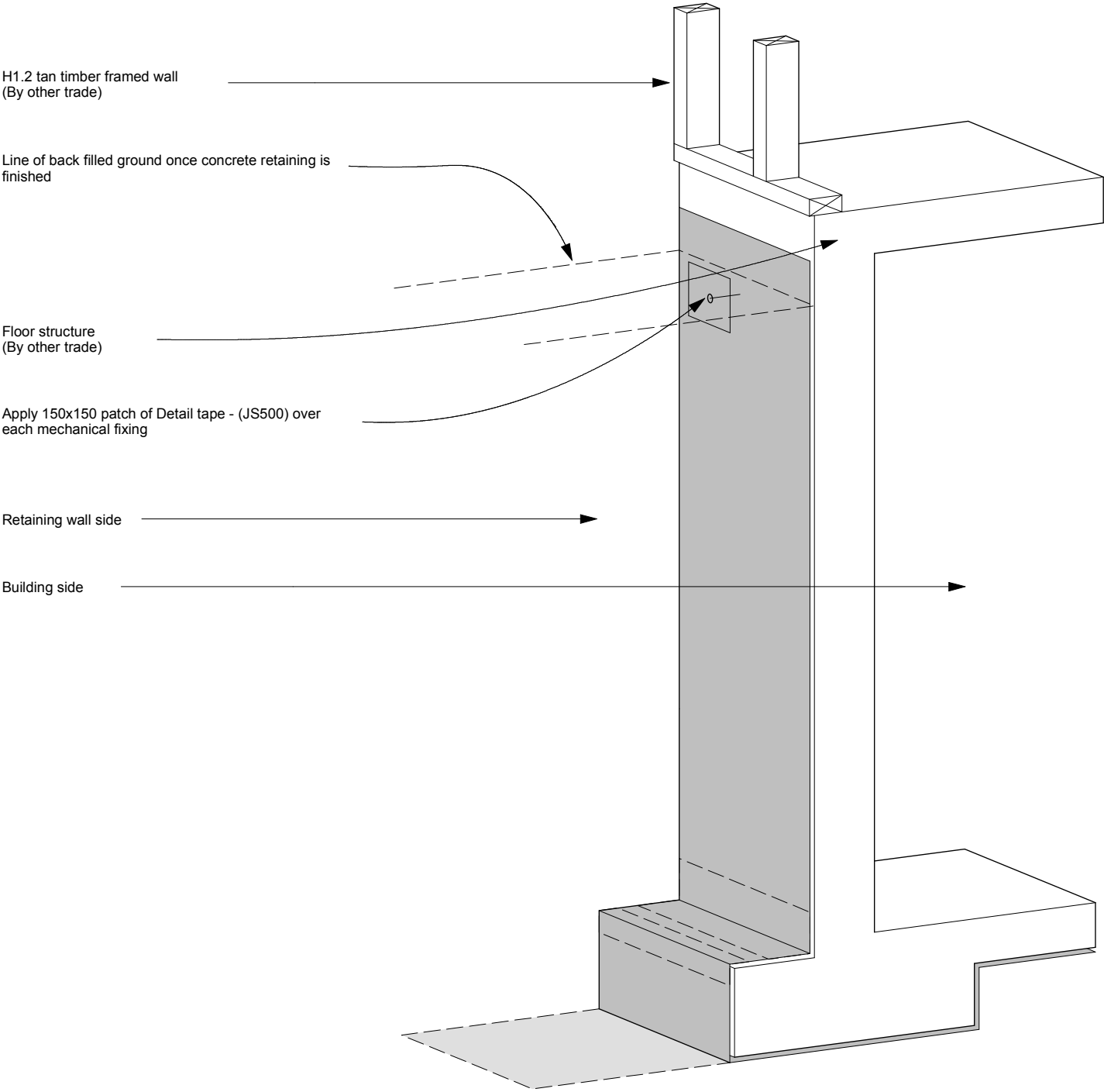
Protecto Wrap Specifiers Guide	Concrete Retaining Wall Protecto Wall - JS140/60 / Detail tape - JS500 Protecto Tape - EIFS Tape <small>Technical specification subject to change without notice</small>	CAD Ref:	PW06.8	Sheet :
		Date :	June 2009	07.1.6
		Revision :		



Step 05

Note:
Protecto Wrap products are designed to be covered
and are therefore not UV stable - cover within four
weeks of installation.

Protecto Wrap Specifiers Guide	Concrete Retaining Wall Protecto Wall - JS140/60 / Detail tape - JS500 Protecto Tape - EIFS Tape <small>Technical specification subject to change without notice</small>	CAD Ref:	PW06.8	Sheet :
		Date :	June 2009	07.1.7
		Revision :		



Step 06

Note:
Protecto Wrap products are designed to be covered
and are therefore not UV stable - cover within four
weeks of installation.

Concrete Retaining Wall

Protecto Wall - JS140/60 / Detail tape - JS500

Protecto Tape - EIFS Tape

Technical specification subject to change without notice

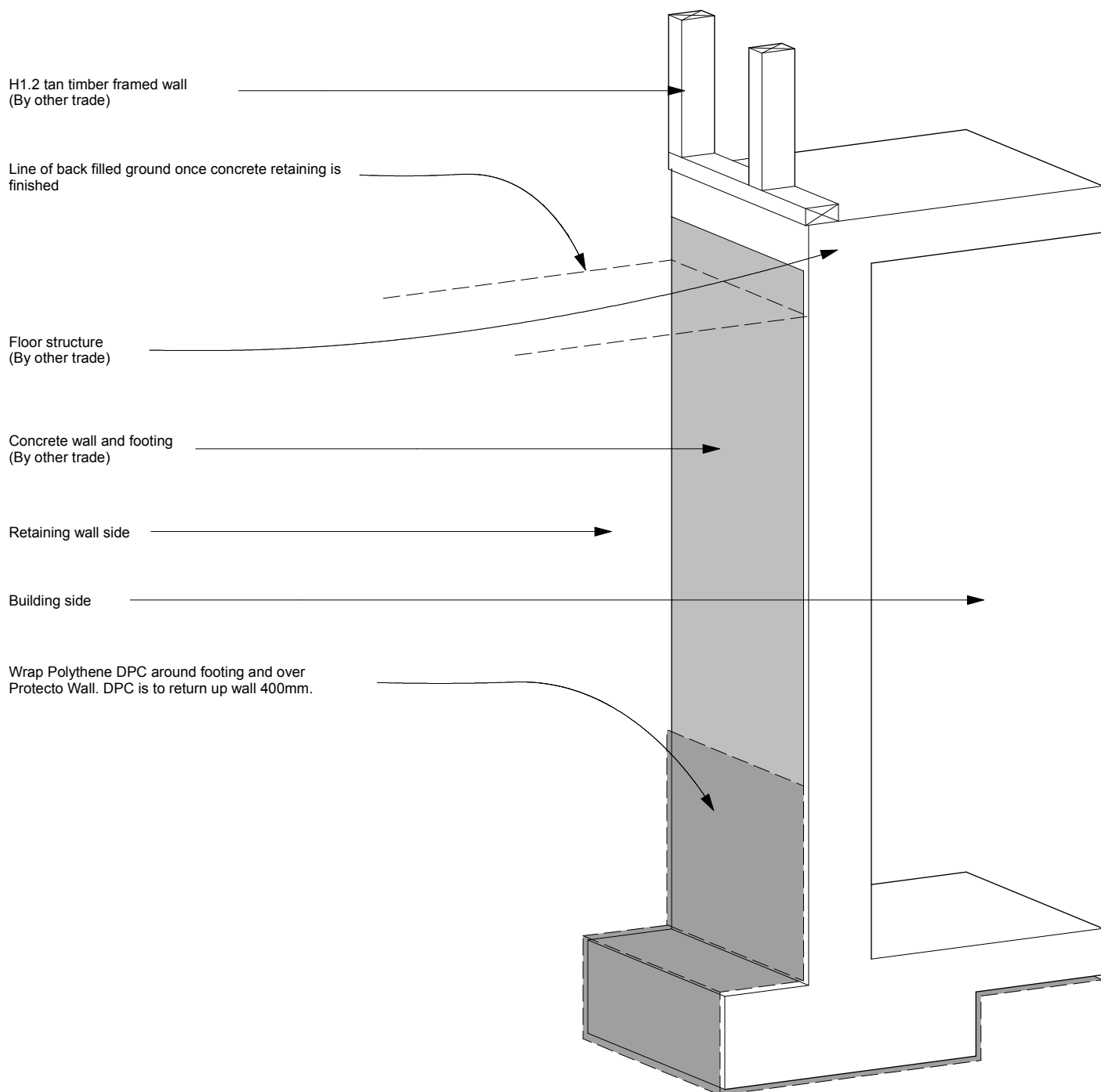
CAD Ref: PW06.8

Date : June 2009

Revision :

Sheet :

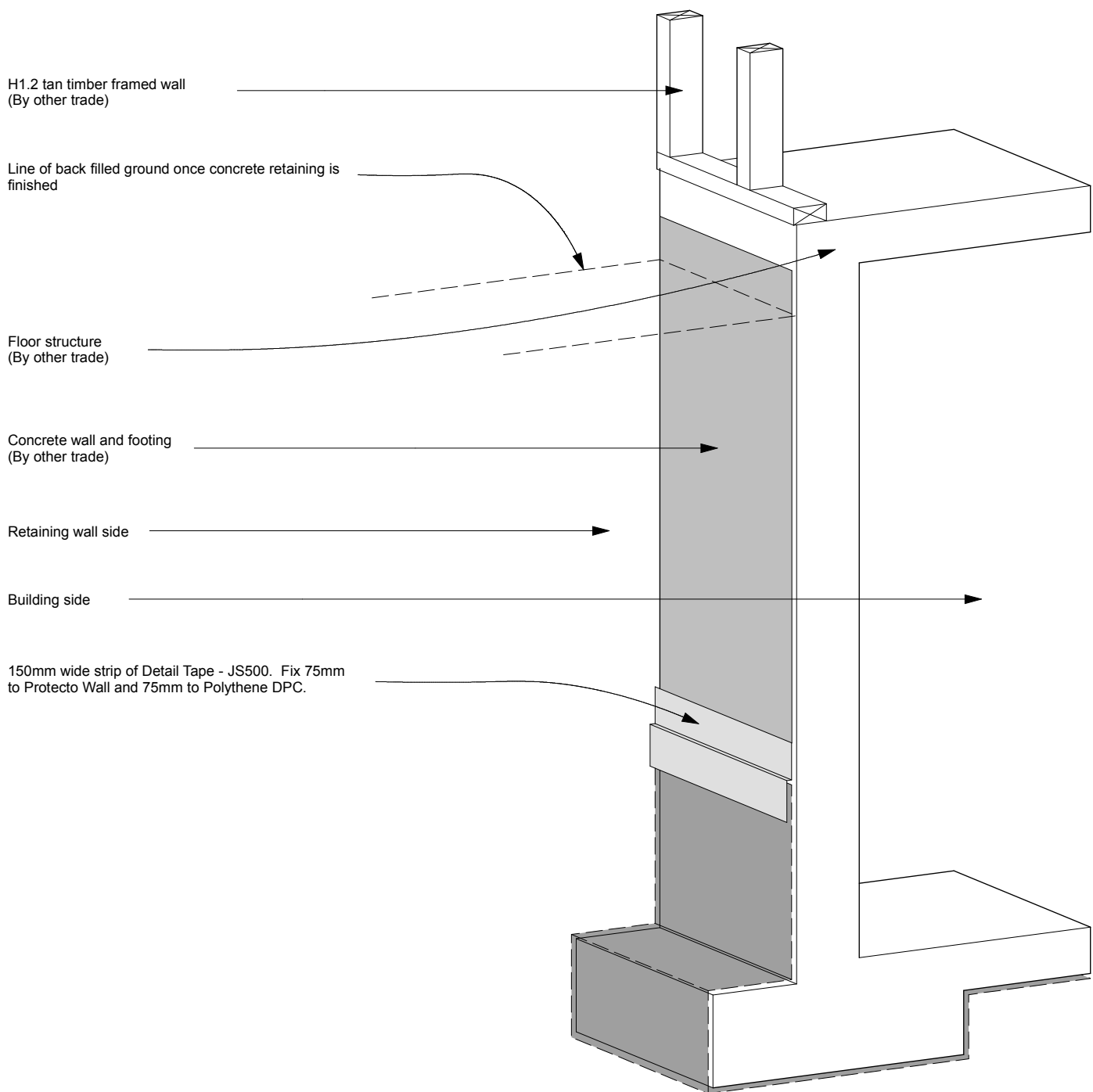
07.1.8



Step 07

Note:
Protecto Wrap products are designed to be covered
and are therefore not UV stable - cover within four
weeks of installation.

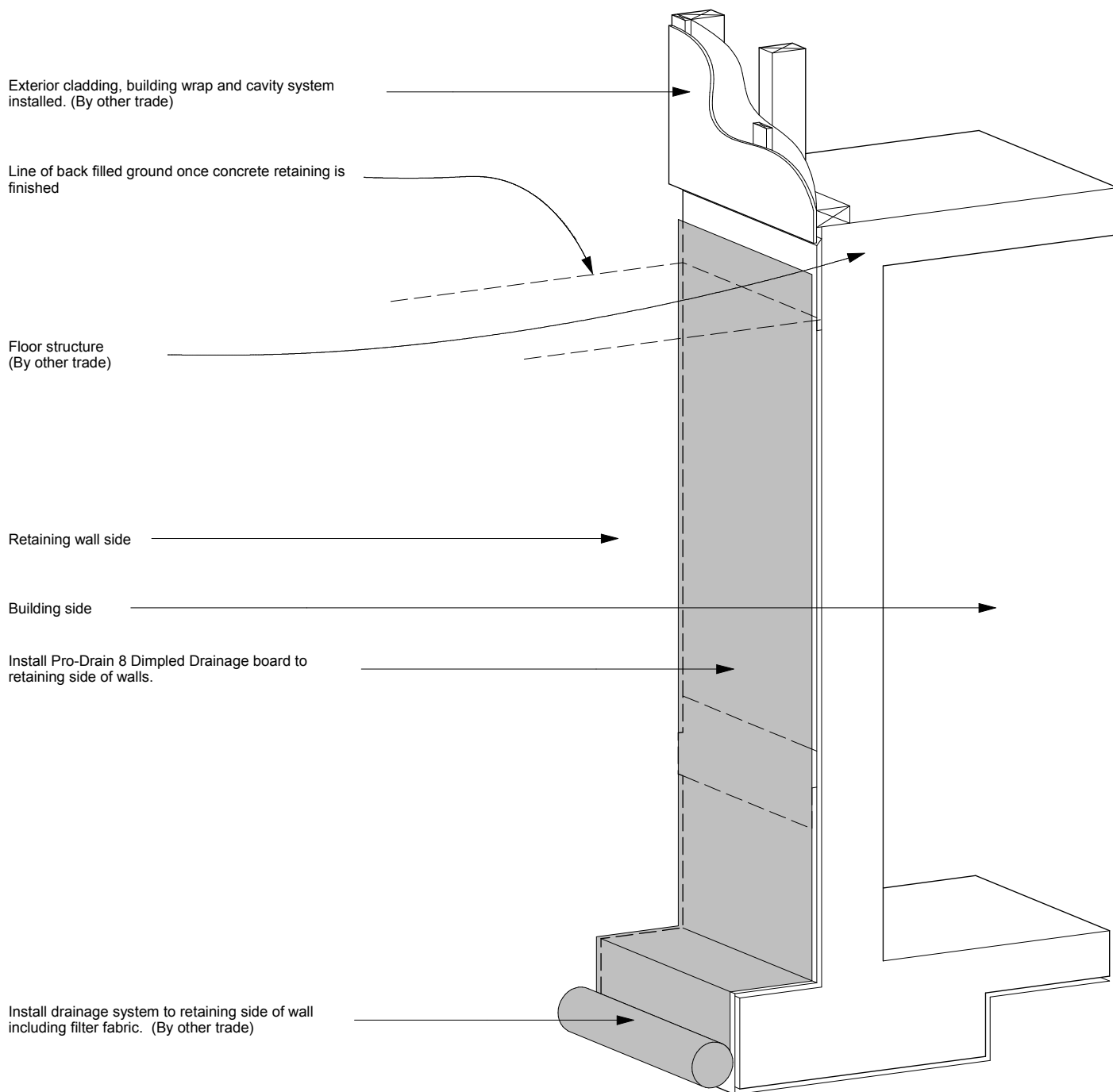
Protecto Wrap Specifiers Guide	Concrete Retaining Wall	CAD Ref:	PW06.8	Sheet : 07.1.9
	Protecto Wall - JS140/60 / Detail tape - JS500	Date :	June 2009	
	Protecto Tape - EIFS Tape	Revision :		
	Technical specification subject to change without notice.			



Step 08

Note:
Protecto Wrap products are designed to be covered
and are therefore not UV stable - cover within four
weeks of installation.

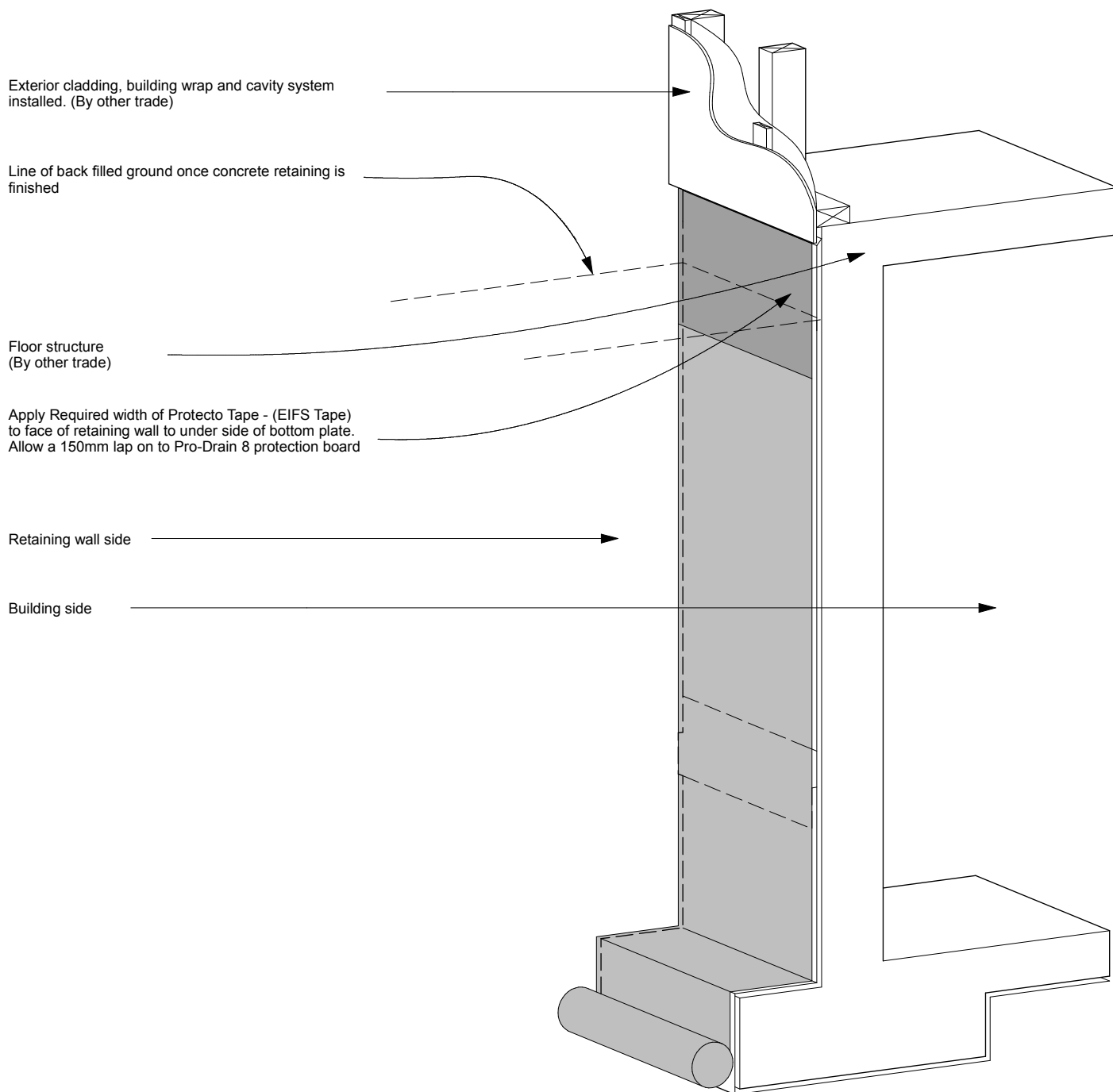
Protecto Wrap Specifiers Guide	Concrete Retaining Wall Protecto Wall - JS140/60 / Detail tape - JS500 Protecto Tape - EIFS Tape <small>Technical specification subject to change without notice</small>	CAD Ref:	PW06.8	Sheet : 07.1.10
		Date :	June 2009	
		Revision :		



Step 09

Note:
Protecto Wrap products are designed to be covered
and are therefore not UV stable - cover within four
weeks of installation.

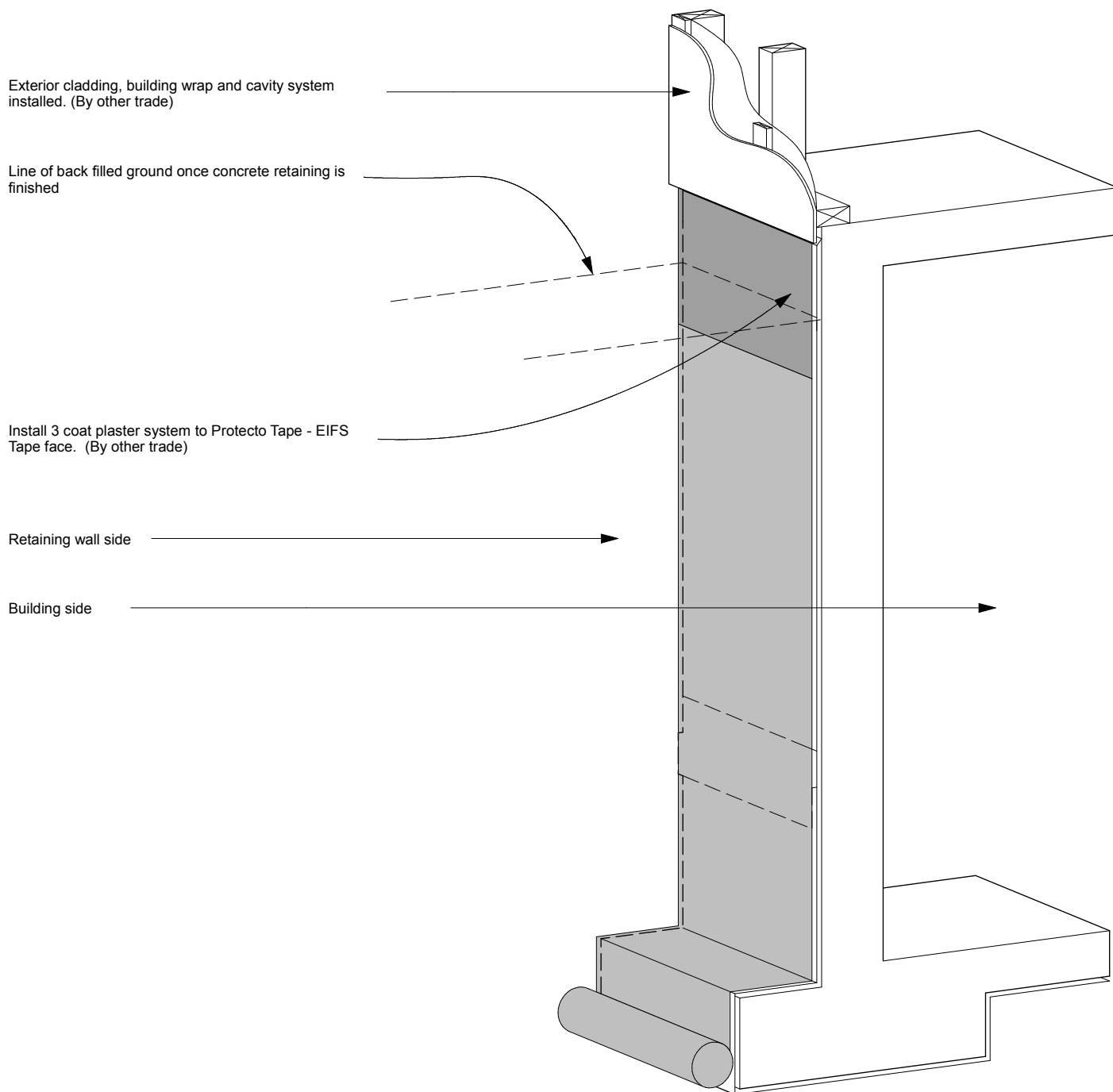
Protecto Wrap Specifiers Guide	Concrete Retaining Wall Protecto Wall - JS140/60 / Detail tape - JS500 Protecto Tape - EIFS Tape <small>Technical specification subject to change without notice</small>	CAD Ref:	PW06.8	Sheet : 07.1.11
		Date :	June 2009	
		Revision :		



Step 10

Note:
Protecto Wrap products are designed to be covered
and are therefore not UV stable - cover within four
weeks of installation.

Protecto Wrap Specifiers Guide	Concrete Retaining Wall Protecto Wall - JS140/60 / Detail tape - JS500 Protecto Tape - EIFS Tape <small>Technical specification subject to change without notice</small>	CAD Ref:	PW06.8	Sheet :
		Date :	June 2009	07.1.12
		Revision :		



Step 11

Note:
Protecto Wrap products are designed to be covered
and are therefore not UV stable - cover within four
weeks of installation.

Protecto Wrap Specifiers Guide	Concrete Retaining Wall Protecto Wall - JS140/60 / Detail tape - JS500 Protecto Tape - EIFS Tape <small>Technical specification subject to change without notice</small>	CAD Ref:	PW06.8	Sheet :
		Date :	June 2009	07.1.13
		Revision :		