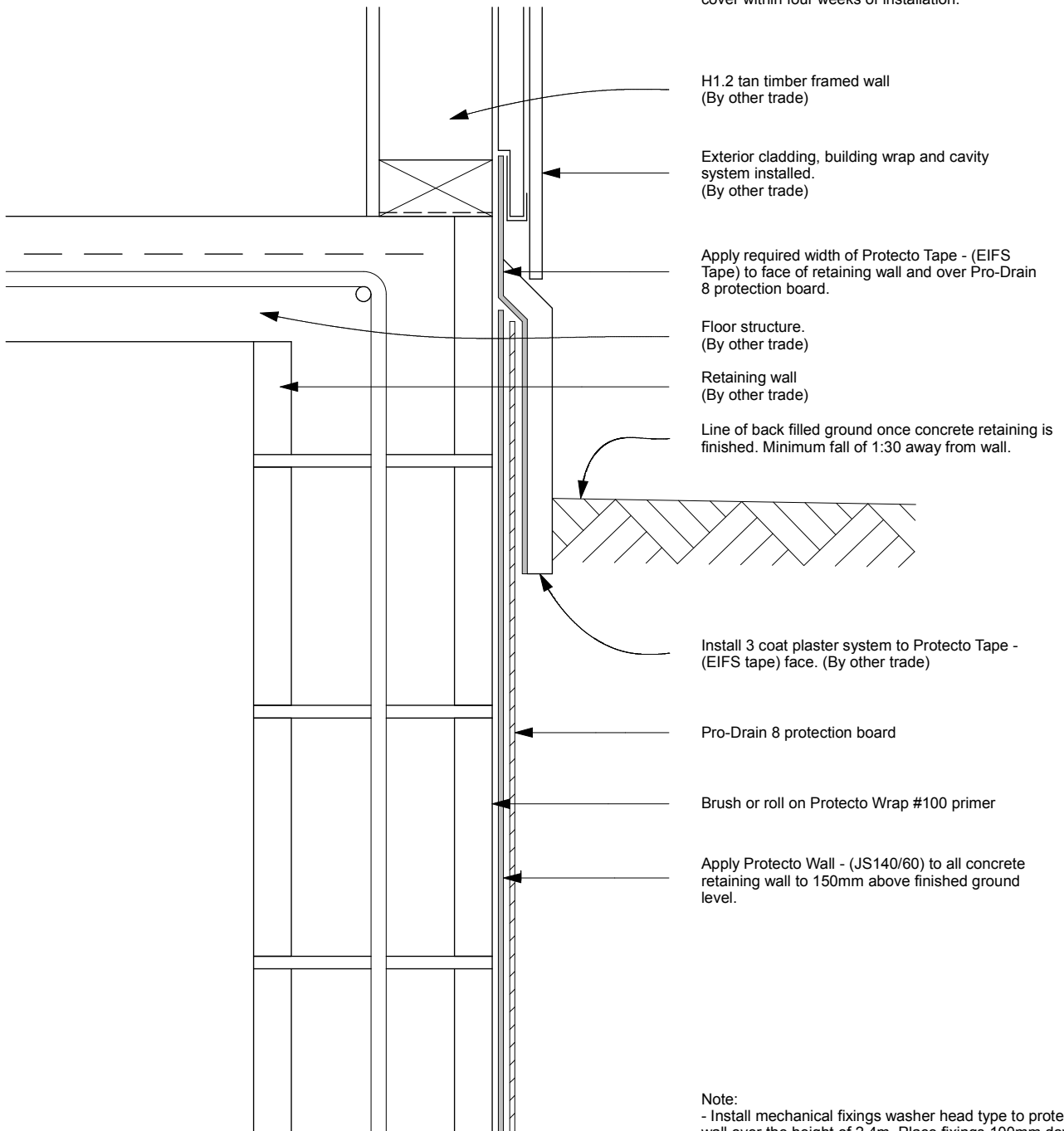


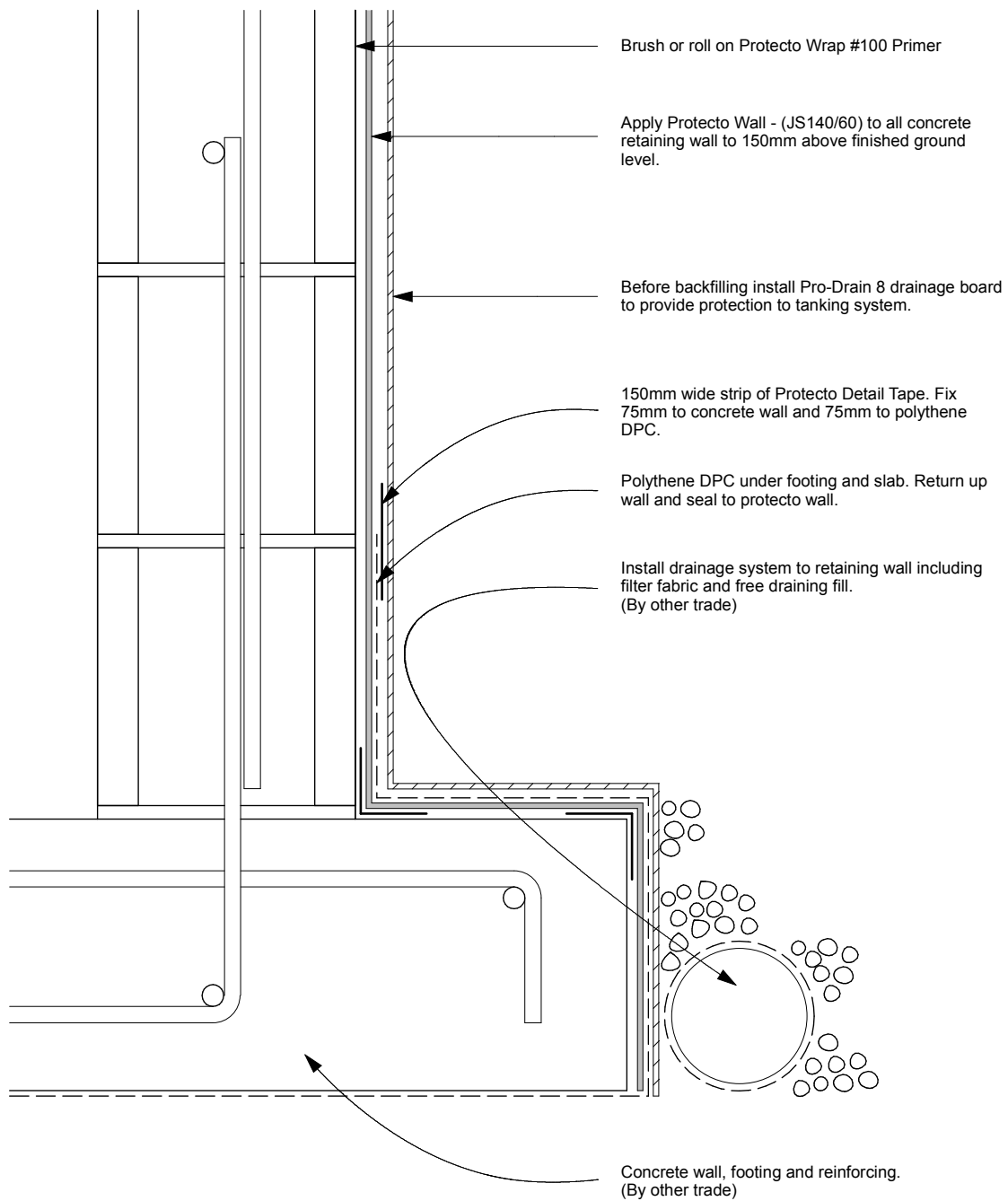
Note:
 Protecto Wrap products are designed to be covered and are therefore not UV stable - cover within four weeks of installation.



Note:
 - Install mechanical fixings washer head type to protecto wall over the height of 2.4m. Place fixings 100mm down from top @ 300mm cts.
 - Blockwork must be flush not pointed.

concrete retaining wall
 detail
 scale
 1:5

Protecto Wrap Specifiers Guide	Concrete retaining wall Protecto wall - JS140/60 / Detail Tape - JS500 Protecto Tape - EIFS (Section Details) <small>Technical specification subject to change without notice</small>	CAD Ref: PW06.4	Sheet : 07.1.2
		Date : June 2009	
		Revision :	



concrete retaining wall
detail
scale
1:5

Note:
Protecto Wrap products are designed to be covered and are therefore not UV stable - cover within four weeks of installation.

Protecto Wrap Specifiers Guide	Concrete retaining wall Protecto wall - JS140/60 / Detail Tape - JS500 Protecto Tape - EIFS (Section Details)	CAD Ref: PW06.4	Sheet : 07.1.1
		Date : June 2009	
		Revision :	

Technical specification subject to change without notice