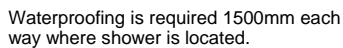


Waterproofing is to be on a fibre compressed sheet or a concrete substrate to wall and floor. If Gib is used to line walls a mechanical fixing is required within top 100mm of waterproofing membrane into studs.

Waterproofing is required 300mm above the shower rose head. Pus 1800mm from the floor

Vanity Waste:
Waterproof all pipe penetrations with AFM-500 detail tape

'Protecto Wrap' waterproof flooring membrane



Protecto Wrap Specifiers Guide

Typical bathroom layout

AFM 500 Detail Tape / AFM-WM Anti Fracture and Waterproof Membrane
(Installation Steps)

Technical specification subject to change without notice

Revision :

Sheet :

06.7.1

Note:

Waterproofing is to be on a fibre compressed sheet or a concrete substrate to wall and floor. If Gib is used to line walls a mechanical fixing is required within top 100mm of waterproofing membrane into studs.

Waterproofing is required to all penetrations to waterproof membrane.

Waterproofing is required 300mm above the shower rose head. Plus 1800mm from the floor

Where a door occurs a water stop angle is required. Waterproofing membrane and angle is to terminate below finished tile level.

Waterproofing is required 300mm above bath rim.

Shower rose. Seal penetration.

Vanity Waste:
Waterproof all pipe penetrations with AFM 500 Detail Tape

The waterproofing membrane carries into the metal channel and extends down to the floor membrane level under the bath.

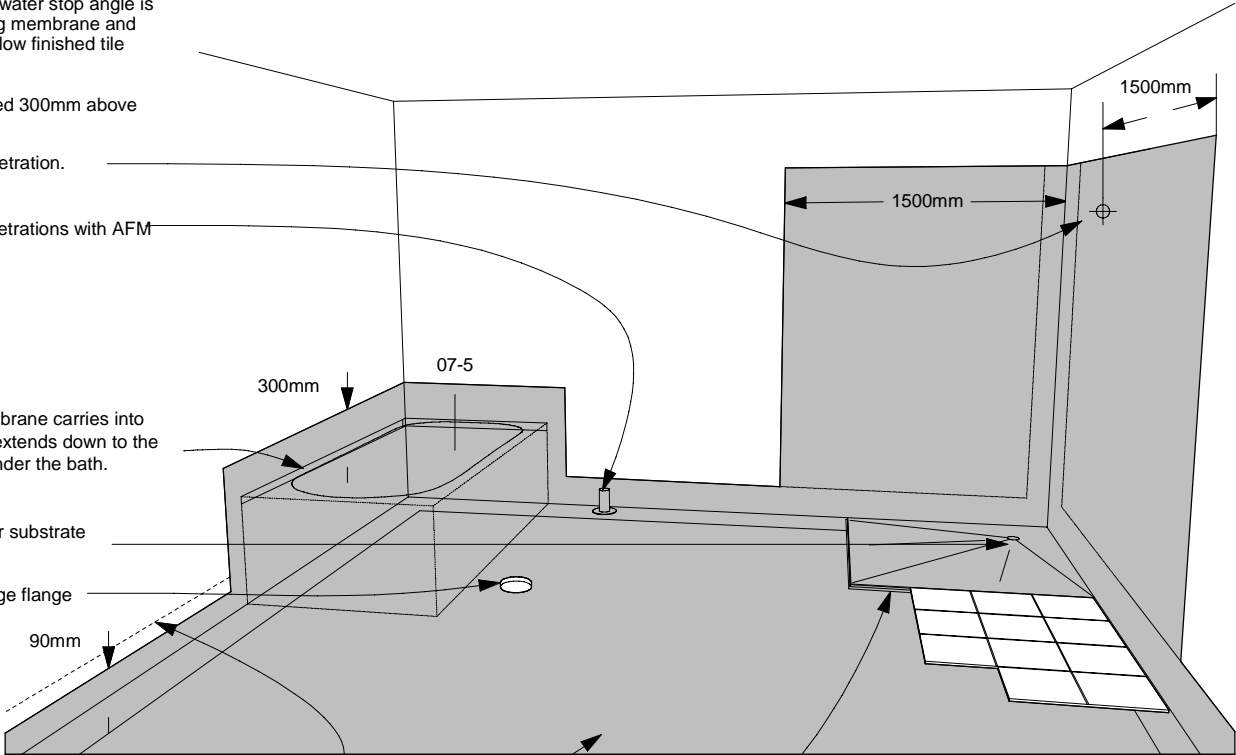
Step down shower floor substrate with falls to waste pipe.

Floor waste with drainage flange

Finish floor tile height / skirting board shown dotted 20mm above top of waterproofed membrane

'Protecto Wrap' waterproof flooring membrane

The waterproofing membrane and water stop angle terminate at underside of the bathroom floor tiles.



typical layout of bathroom with step-down shower

Waterproofing is required 20mm above top of tile or top of skirting board.

Waterproofing is required 1500mm each way where shower is located.

Protecto Wrap Specifiers Guide	Typical bathroom layout AFM 500 Detail Tape / AFM-WM Anti Fracture and Waterproof Membrane (Installation Steps)	CAD Ref: PW06.7	Sheet : 06.7.2
		Date : April 2005	
		Revision :	

Technical specification subject to change without notice

Note:

Waterproofing is to be on a fibre compressed sheet or a concrete substrate to wall and floor. If Gib is used to line walls a mechanical fixing is required within top 100mm of waterproofing membrane into studs.

Waterproofing is required to all penetrations to waterproof membrane.

Waterproofing is required 1800mm from finished floor level

Where a door occurs a water stop angle is required. Waterproofing membrane and angle is to terminate below finished tile level.

Shower rose and bath outlet.

Shower and bath taps are installed away from the splash zone of the shower rose

Waterproofing membrane

Shower over

Waterproof all pipe penetrations with AFM 500 Detail Tape

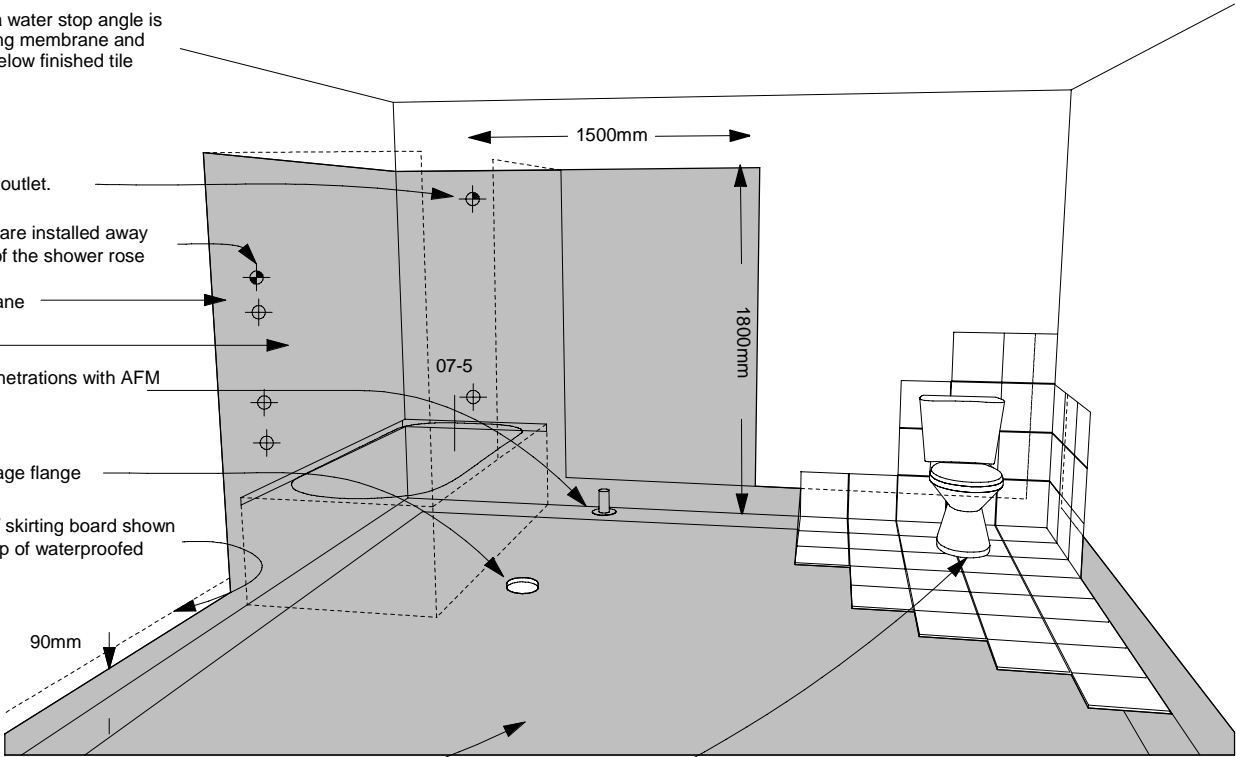
Floor waste with drainage flange

Finish floor tile height / skirting board shown dotted 20mm above top of waterproofed membrane

90mm

'Protecto Wrap' waterproof flooring membrane

Waterproofing is required to WC where waste outlet penetrates the floor waterproofing membrane



typical layout of bathroom with shower over and wc with tiled walls

Waterproofing is required 20mm above top of tile or top of skirting board.

Waterproofing is required 1500mm each way where shower is located.

Protecto Wrap Specifiers Guide	Typical bathroom layout AFM 500 Detail Tape / AFM-WM Anti Fracture and Waterproof Membrane (Installation Steps) <small>Technical specification subject to change without notice</small>	CAD Ref: PW06.7	Sheet : 06.7.3
		Date : April 2005	
		Revision :	

Note:

Waterproofing is to be on a fibre compressed sheet or a concrete substrate to wall and floor. If Gib is used to walls a mechanical fixing is required within top 100mm of waterproofing membrane into studs.

Waterproofing is required to all penetrations to waterproof membrane.

Waterproofing is required 300mm above the shower rose head and 1800mm from the floor

Where a door occurs a water stop angle is required. Waterproofing membrane and angle is to terminate below finished tile level.

Shower rose and bath outlet.

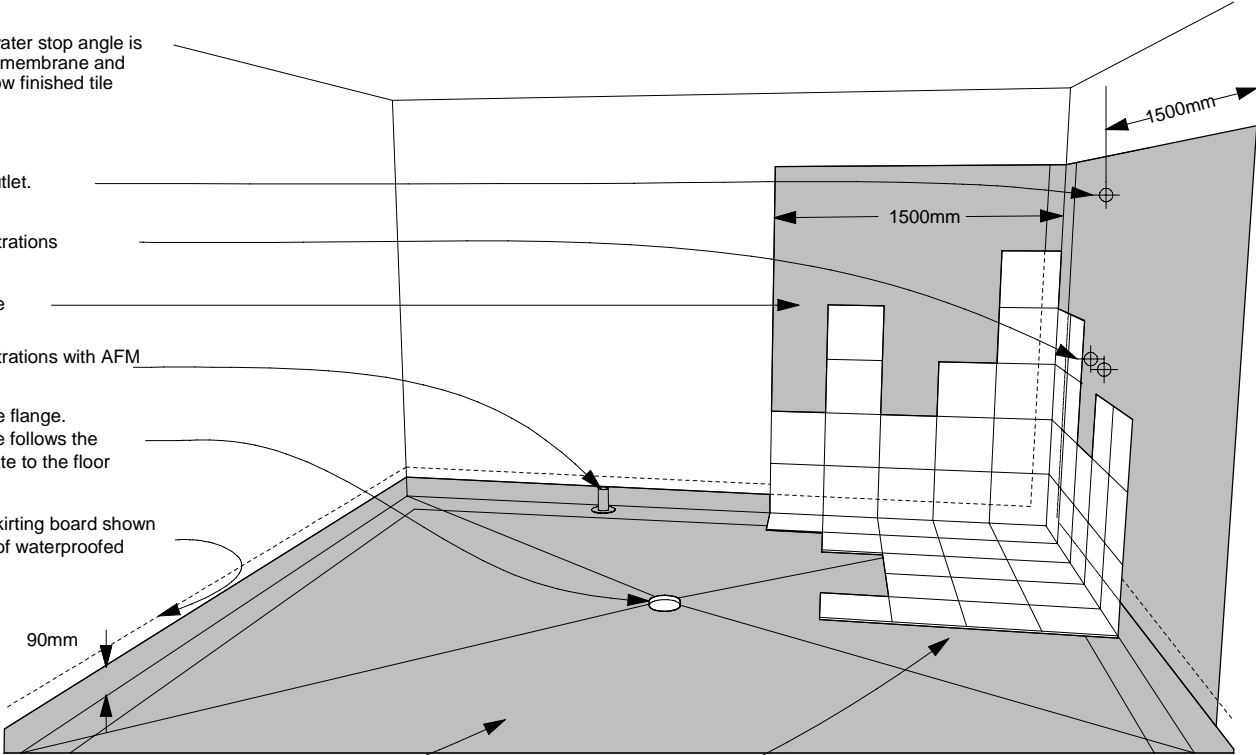
Waterproof all pipe penetrations

Waterproofing membrane

Waterproof all pipe penetrations with AFM 500 Detail Tape

Floor waste with drainage flange. Waterproofing membrane follows the graded 1:50 floor substrate to the floor waste

Finish floor tile height / skirting board shown dotted 20mm above top of waterproofed membrane



'Protecto Wrap' waterproof flooring membrane

Waterproofing with selected tiles over

typical layout of bathroom with shower over and wc with tiled walls

Waterproofing is required 20mm above top of tile or top of skirting board.

Waterproofing is required 1500mm each way where shower is located.

Protecto Wrap Specifiers Guide	Typical bathroom layout AFM 500 Detail Tape / AFM-WM Anti Fracture and Waterproof Membrane (Installation Steps) <small>Technical specification subject to change without notice</small>	CAD Ref: PW06.7	Sheet : 06.7.4
		Date : April 2005	
		Revision :	