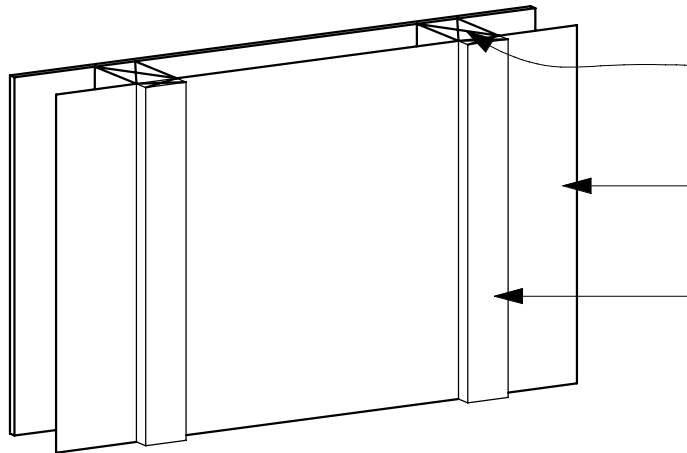


step 01

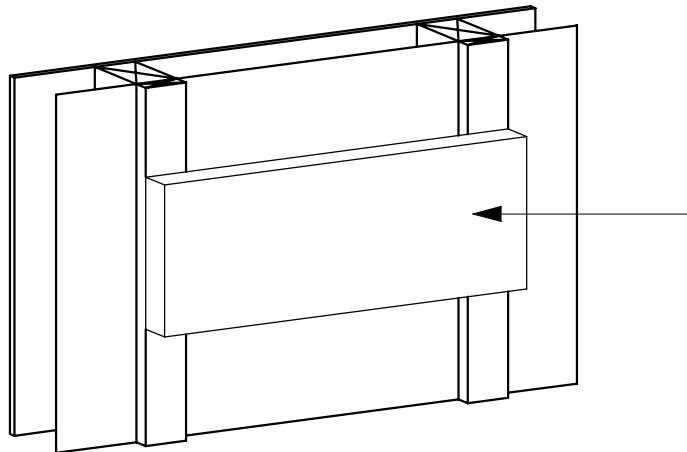


H1.2 Tan wall framing
(By other trade)

Approved breather-type building wrap.
Carry over top plate
(By other trade)

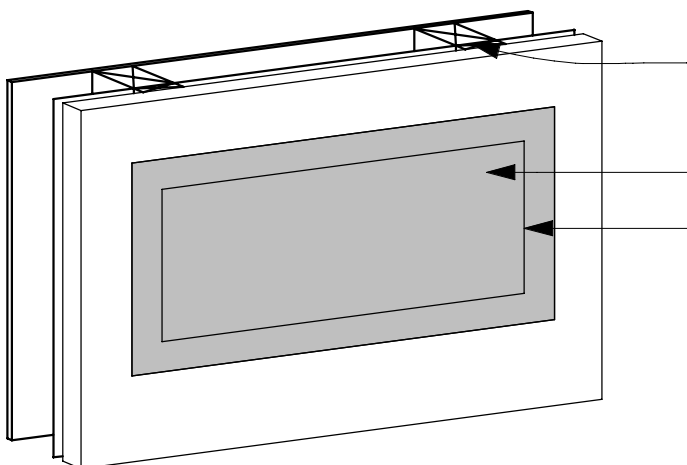
Battens to form cavity
(By other trade)

step 02



Fix H3.1 blocking timber
(By other trade)

step 03



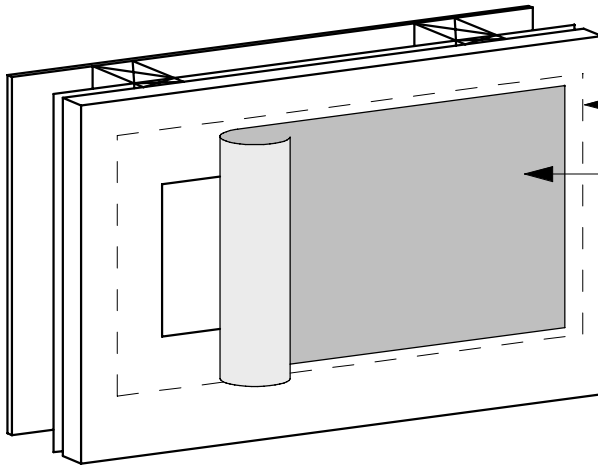
Polystyrene cladding installed to
manufacturers specifications - face of timber
block and face to be flush

Spray Protecto Tak Primer Adhesive on to
block and 50mm on to cladding.

Line of timber blocking installed in step 2

Note:
Protecto Wrap products are designed to be
covered and are therefore not UV stable -
cover within four weeks of installation.

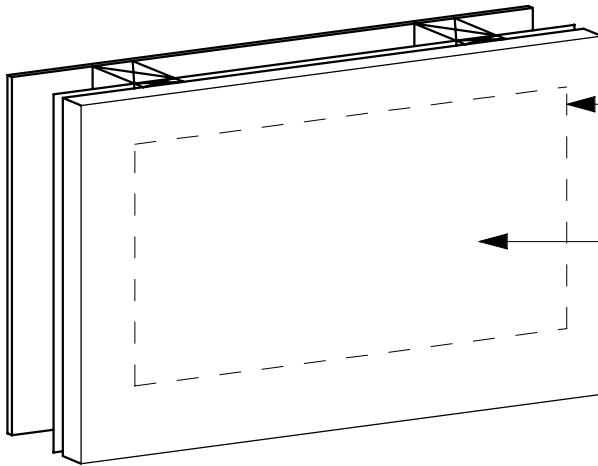
step 04



Line of Protecto Tak Primer

Install Protecto Tape - (EIFS Tape)
extending minimum of 100mm beyond point
of cladding penetration and 50mm past
blocking

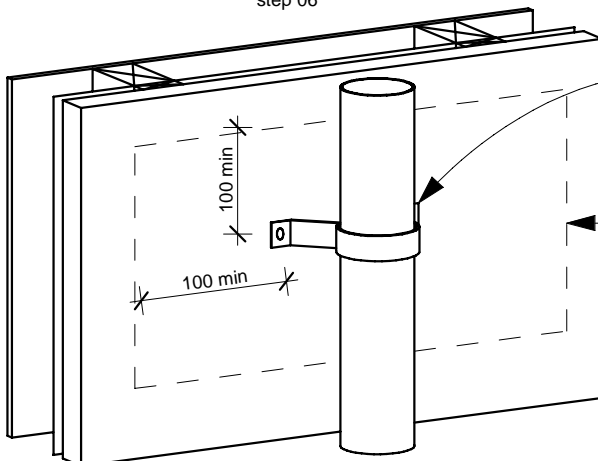
step 05



Line of Protecto Tape - (EIFS tape) flashing

Plaster finish with reinforced fibreglass
mesh in accordance with manufacturers
specifications

step 06



Fixings to penetrate Protecto Tape - EIFS
Tape. Line of Protecto Tape flashing

Line of timber blocking installed in step 2

Note:
Protecto Wrap products are designed to be
covered and are therefore not UV stable -
cover within four weeks of installation.

Do not drill holes for fixings.