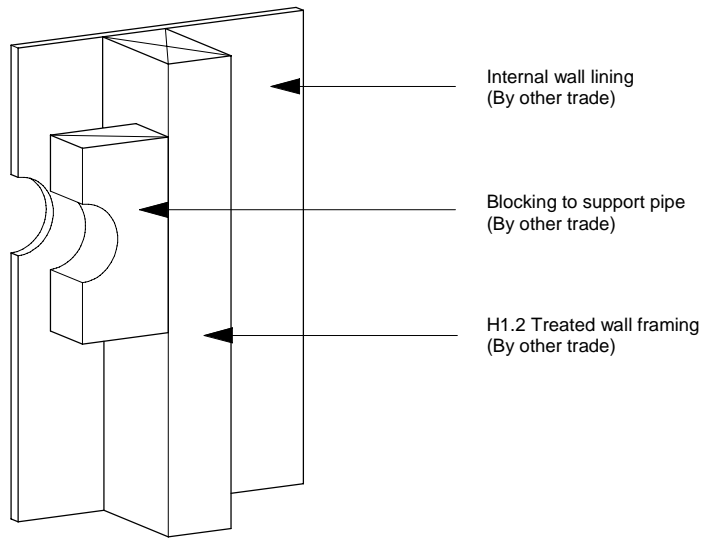
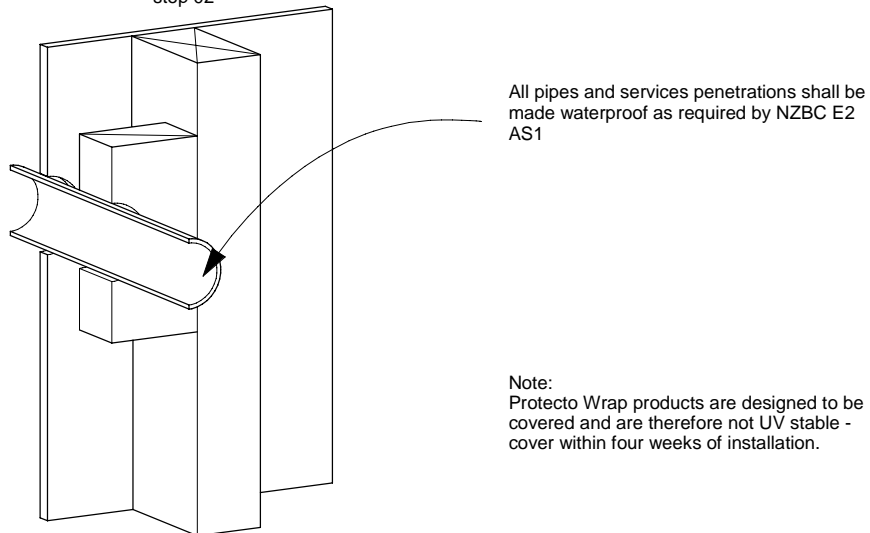


step 01



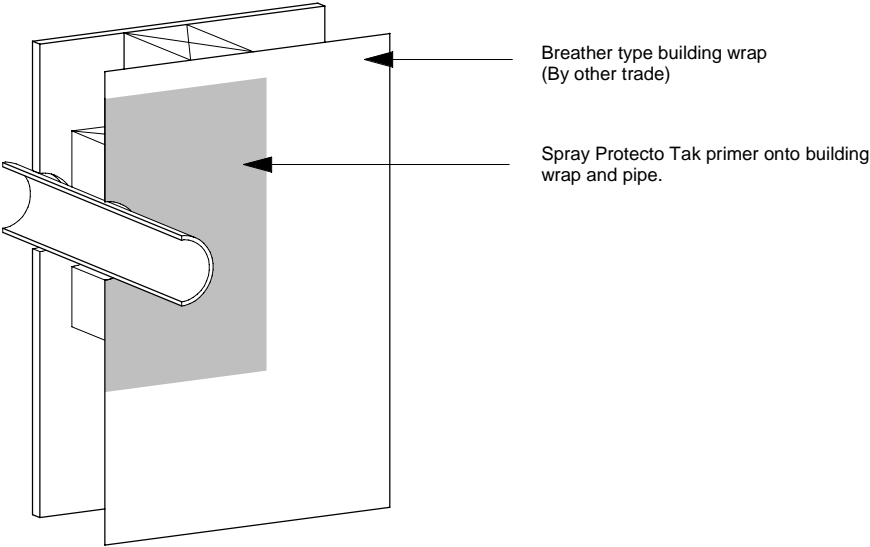
step 02



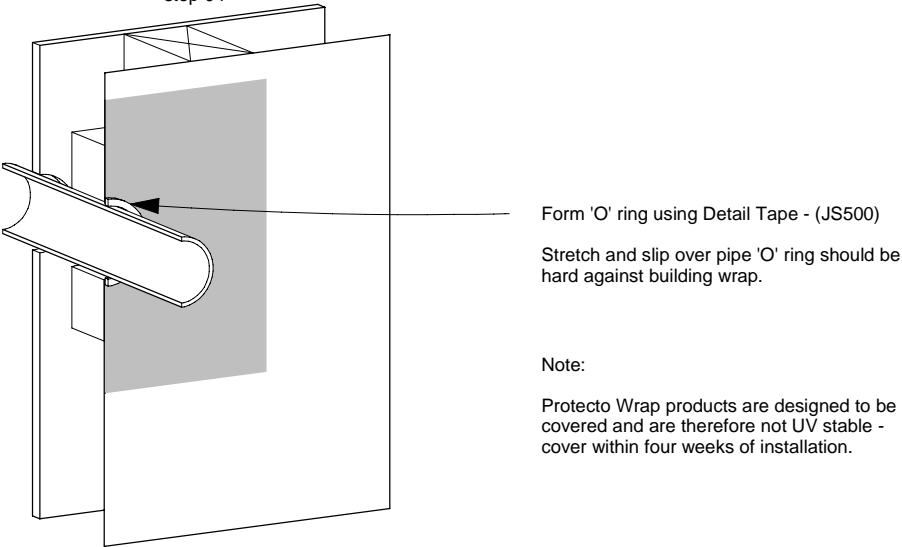
Note:  
Protecto Wrap products are designed to be covered and are therefore not UV stable - cover within four weeks of installation.

|                                   |                                                                                                                                                                        |                   |                       |
|-----------------------------------|------------------------------------------------------------------------------------------------------------------------------------------------------------------------|-------------------|-----------------------|
| Protecto Wrap<br>Specifiers Guide | Wall penetration<br>Detail Tape - JS500 / Protecto Tape - EIFS Tape<br>(Installation Steps)<br><small>Technical specification subject to change without notice</small> | CAD Ref: PW04.1   | Sheet :<br><br>04.1.2 |
|                                   |                                                                                                                                                                        | Date : April 2005 |                       |
|                                   |                                                                                                                                                                        | Revision :        |                       |

step 03



step 04

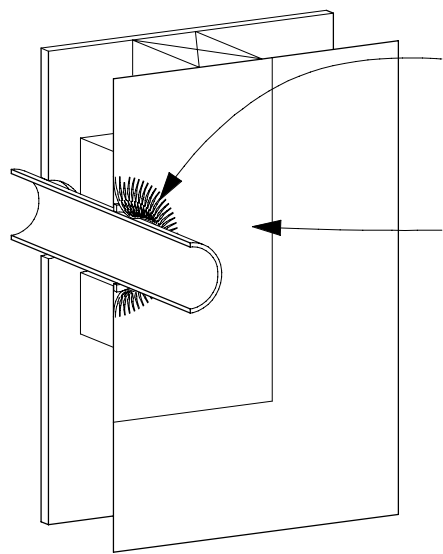


Note:

Protecto Wrap products are designed to be  
covered and are therefore not UV stable -  
cover within four weeks of installation.

|                                   |                                                                                                                                                                            |                   |                       |
|-----------------------------------|----------------------------------------------------------------------------------------------------------------------------------------------------------------------------|-------------------|-----------------------|
| Protecto Wrap<br>Specifiers Guide | Wall penetration<br>Detail Tape - JS500 / Protecto Tape - EIFS Tape<br>(Installation Steps)<br><br><small>Technical specification subject to change without notice</small> | CAD Ref: PW04.1   | Sheet :<br><br>04.1.3 |
|                                   |                                                                                                                                                                            | Date : April 2005 |                       |
|                                   |                                                                                                                                                                            | Revision :        |                       |

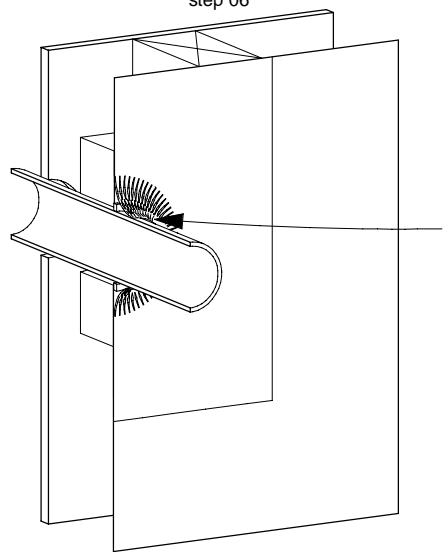
step 05



Install Protecto Tape - (EIFS Tape)  
Flashing 'X' cut center and slide over pipe  
and adhere to building wrap and 'o' ring.

Spray Protecto Tak Primer onto building  
wrap and pipe.

step 06

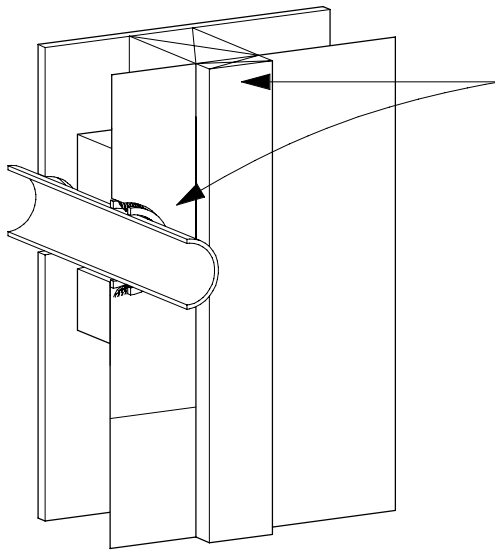


Lap Protecto tape (EIFS Tape) 25mm out  
onto and around pipe.

Note:  
Protecto Wrap products are designed to be  
covered and are therefore not UV stable -  
cover within four weeks of installation.

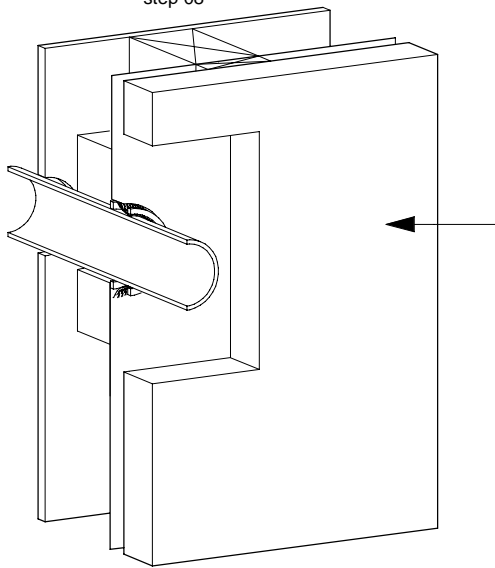
|                                   |                                                                                                                                                                            |                   |                       |
|-----------------------------------|----------------------------------------------------------------------------------------------------------------------------------------------------------------------------|-------------------|-----------------------|
| Protecto Wrap<br>Specifiers Guide | Wall penetration<br>Detail Tape - JS500 / Protecto Tape - EIFS Tape<br>(Installation Steps)<br><br><small>Technical specification subject to change without notice</small> | CAD Ref: PW04.1   | Sheet :<br><br>04.1.4 |
|                                   |                                                                                                                                                                            | Date : April 2005 |                       |
|                                   |                                                                                                                                                                            | Revision :        |                       |

step 07



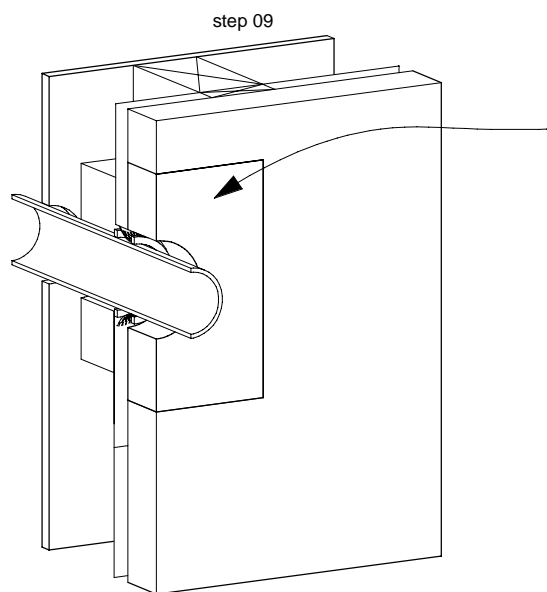
Cavity spacer and battens  
(By other trade)

step 08

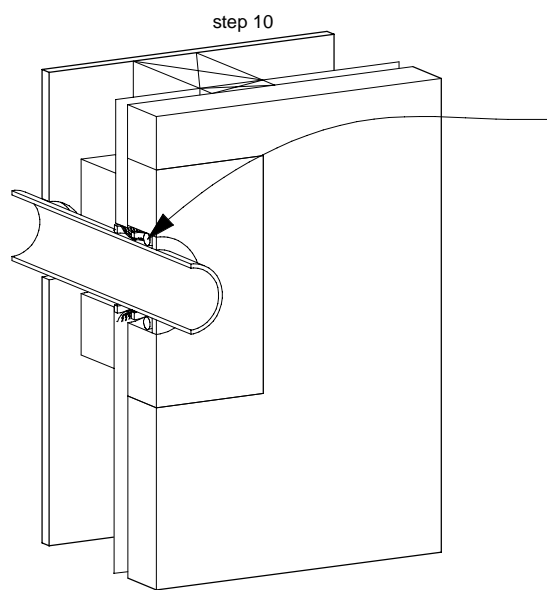


Selected cladding installed to manufacturers  
specifications  
(By other trade)

Note:  
Protecto Wrap products are designed to be  
covered and are therefore not UV stable -  
cover within four weeks of installation.



Proprietary EIFS insert EIFS block (By other trade)

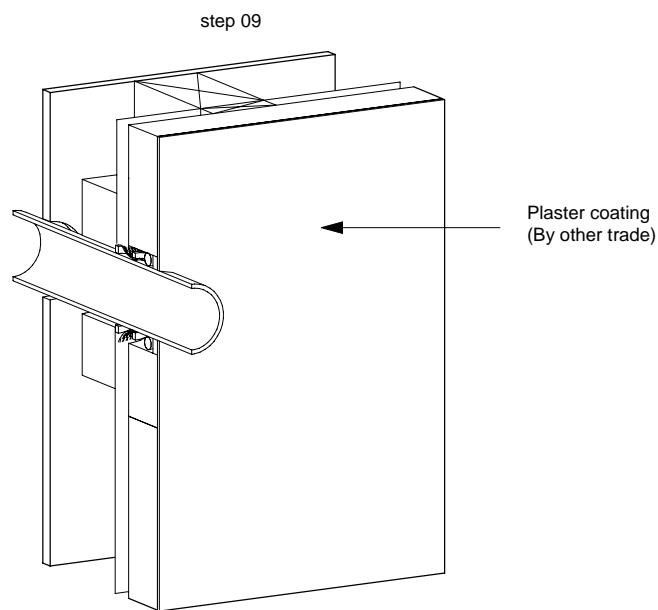


10mm wide 6mm deep sealant bead on foam bond breaker between pipe and EIFS (By other trade)

Note:  
Protecto Wrap products are designed to be covered and are therefore not UV stable - cover within four weeks of installation.

Note:  
Do not allow sealant to contact with Protecto Tape

|                                   |                                                                                                                                                                        |                   |                       |
|-----------------------------------|------------------------------------------------------------------------------------------------------------------------------------------------------------------------|-------------------|-----------------------|
| Protecto Wrap<br>Specifiers Guide | Wall penetration<br>Detail Tape - JS500 / Protecto Tape - EIFS Tape<br>(Installation Steps)<br><small>Technical specification subject to change without notice</small> | CAD Ref: PW04.1   | Sheet :<br><br>04.1.6 |
|                                   |                                                                                                                                                                        | Date : April 2005 |                       |
|                                   |                                                                                                                                                                        | Revision :        |                       |



Note:  
 Protecto Wrap products are designed to be covered and are therefore not UV stable - cover within four weeks of installation.

|                                   |                                                                                                                                                                        |                   |                       |
|-----------------------------------|------------------------------------------------------------------------------------------------------------------------------------------------------------------------|-------------------|-----------------------|
| Protecto Wrap<br>Specifiers Guide | Wall penetration<br>Detail Tape - JS500 / Protecto Tape - EIFS Tape<br>(Installation Steps)<br><small>Technical specification subject to change without notice</small> | CAD Ref: PW04.1   | Sheet :<br><br>04.1.7 |
|                                   |                                                                                                                                                                        | Date : April 2005 |                       |
|                                   |                                                                                                                                                                        | Revision :        |                       |