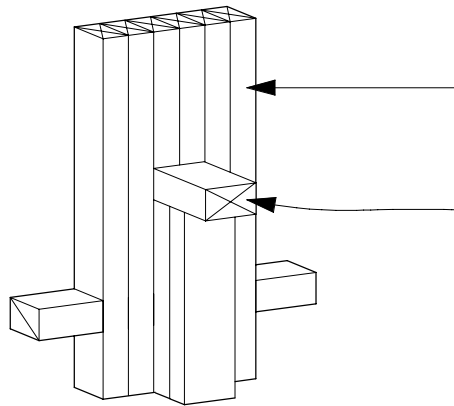


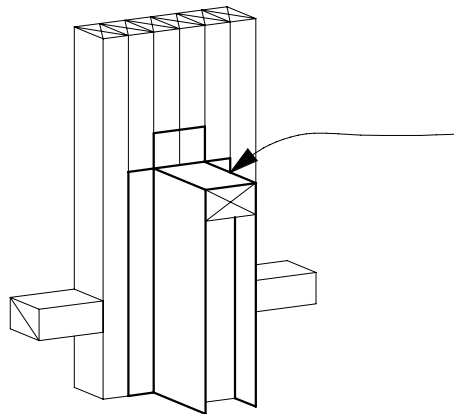
step 01



H1.2 Treated timber wall framing.
(By other trade)

H3.1 Treated timber framing to balustrade.
(By other trade)

step 02



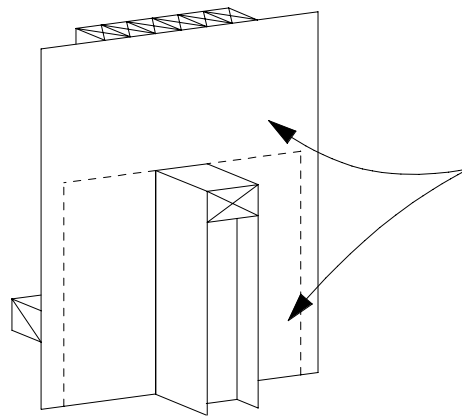
Approved breather-type building wrap to
carry over balustrade top plate and lap with
wall.
(By other trade)

Note:

- Protecto Wrap products are designed to be covered and are therefore not UV stable - cover within four weeks of installation.
- Do not use Protecto Wrap #80 Primer over polystyrene replace with Protecto Tak Primer.

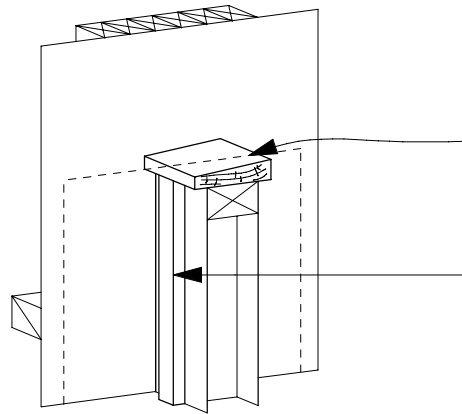
Protecto Wrap Specifiers Guide	Saddle flashing system Detail Tape - JS500 / Protecto Tape - EIFS Tape (Installation Steps) <small>Technical specification subject to change without notice</small>	CAD Ref: PW02.1	Sheet : 03.3.1
		Date : April 2005	
		Revision :	

step 03



Approved breather-type building wrap lap over balustrade building wrap. (By other trade)

step 04



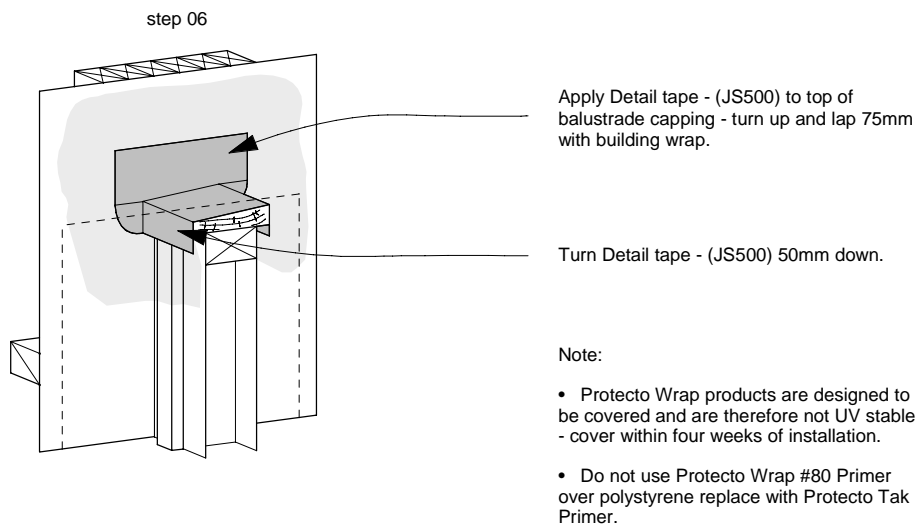
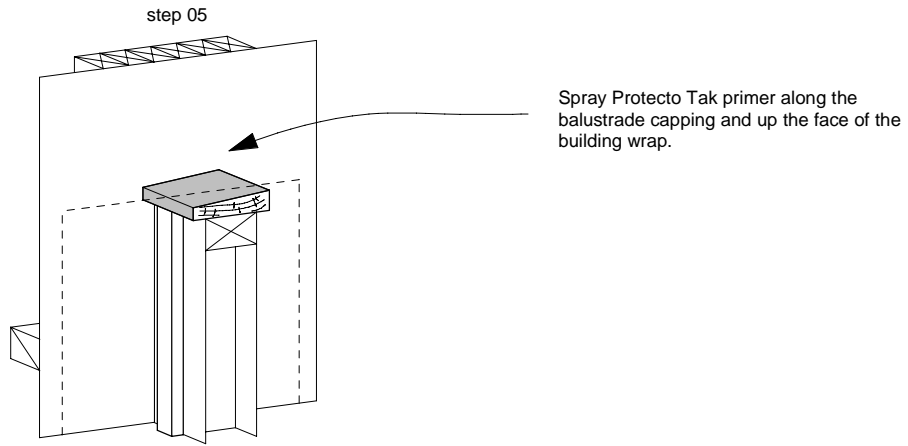
Capping to Balustrade to provide minimum slope as required by NZBC E2 / AS1. (By other trade)

Battens to balustrade to provide drainage cavity. (By other trade)

Note:

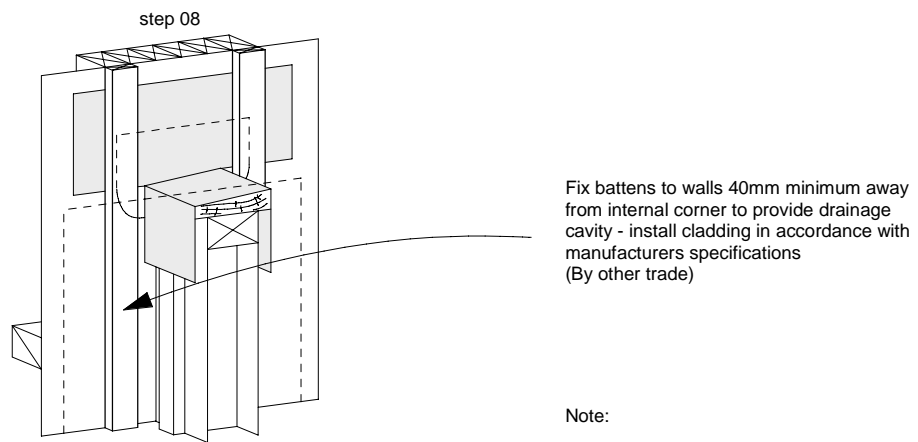
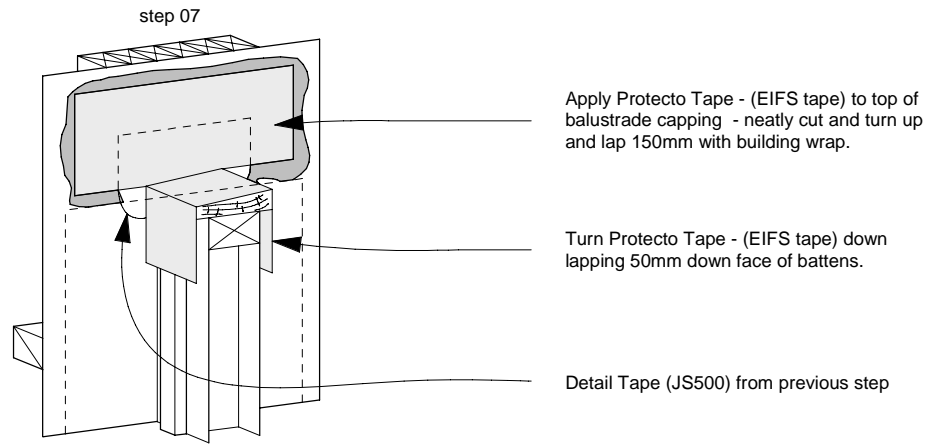
- Protecto Wrap products are designed to be covered and are therefore not UV stable - cover within four weeks of installation.
- Do not use Protecto Wrap #80 Primer over polystyrene replace with Protecto Tak Primer.

Protecto Wrap Specifiers Guide	Saddle flashing system Detail Tape - JS500 / Protecto Tape - EIFS Tape (Installation Steps) <small>Technical specification subject to change without notice</small>	CAD Ref: PW02.1	Sheet : 03.3.2
		Date : April 2005	
		Revision :	



Protecto Wrap Specifiers Guide	Saddle flashing system Detail Tape - JS500 / Protecto Tape - EIFS Tape (Installation Steps)	CAD Ref: PW02.1	Sheet : 03.3.3
		Date : April 2005	
		Revision :	

Technical specification subject to change without notice



Note:

- Protecto Wrap products are designed to be covered and are therefore not UV stable - cover within four weeks of installation.
- Do not use Protecto Wrap #80 Primer over polystyrene replace with Protecto Tak Primer.

Protecto Wrap Specifiers Guide	Saddle flashing system Detail Tape - JS500 / Protecto Tape - EIFS Tape (Installation Steps) <small>Technical specification subject to change without notice</small>	CAD Ref: PW02.1	Sheet : 03.3.4
		Date : April 2005	
		Revision :	