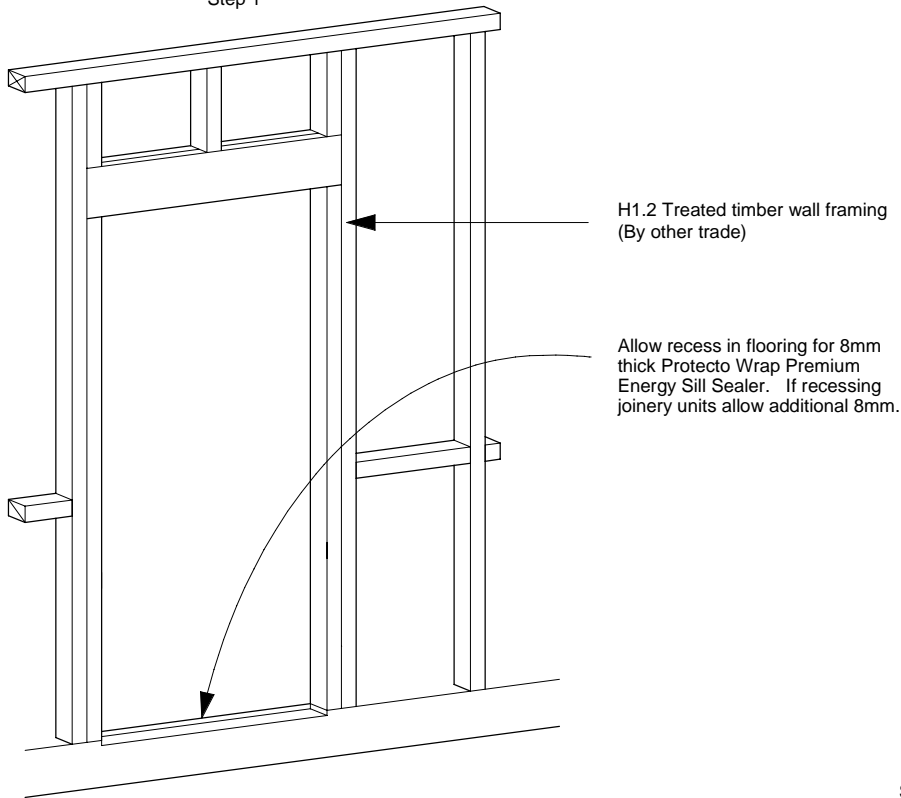


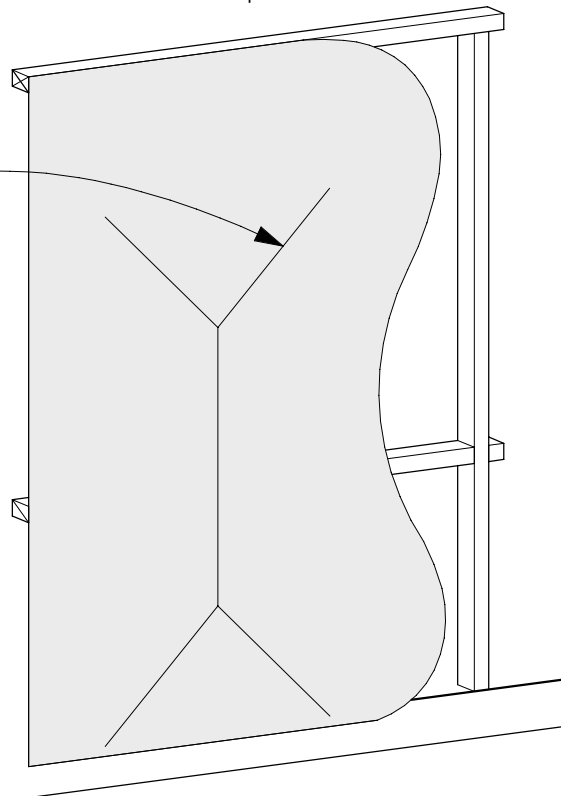
Step 1



Step 2

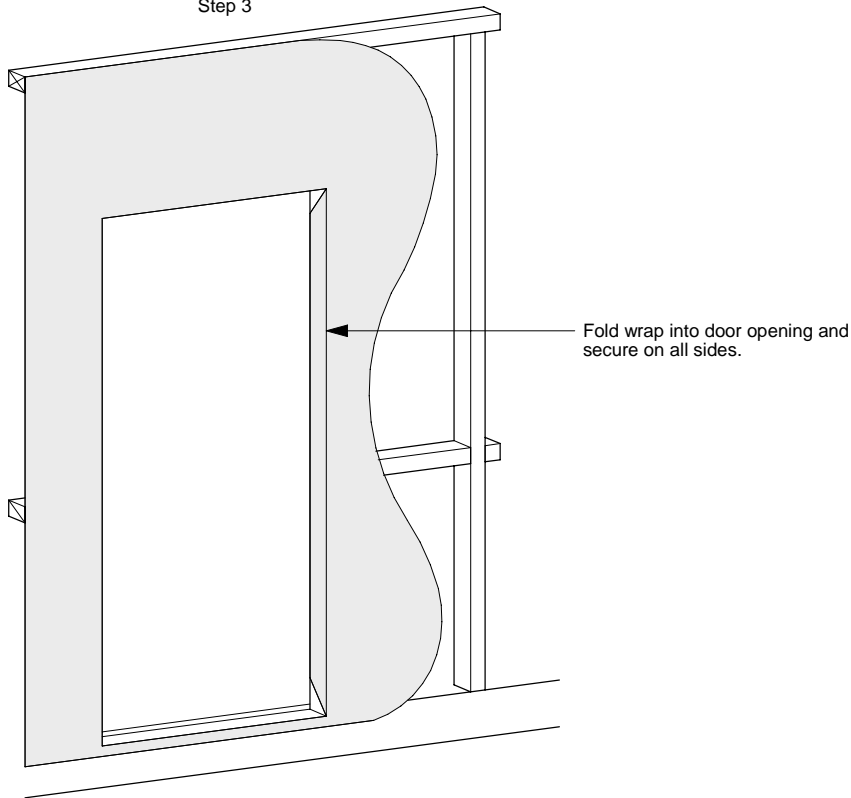
Building wrap installed. Cut wrap 45°
away from each corner of door. Do not
cut an "X" shape.

Note:
Protecto Wrap products are designed to be covered and are
therefore not UV stable - cover within four weeks of
installation.

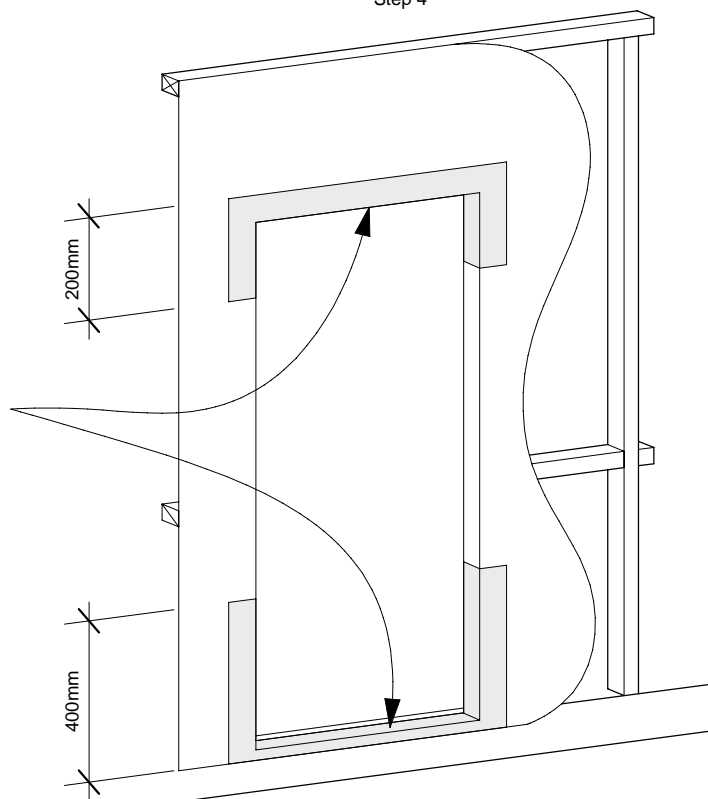


Protecto Wrap Specifiers Guide	Door Flashing System Protecto Sill Tape - BT20XL / Detail Tape - JS500 Head Flashing Tape - BT20XL (Installation Steps) <small>Technical specification subject to change without notice</small>	CAD Ref: PW02.2	Sheet : 02.2.4
		Date : April 2005	
		Revision :	

Step 3



Step 4

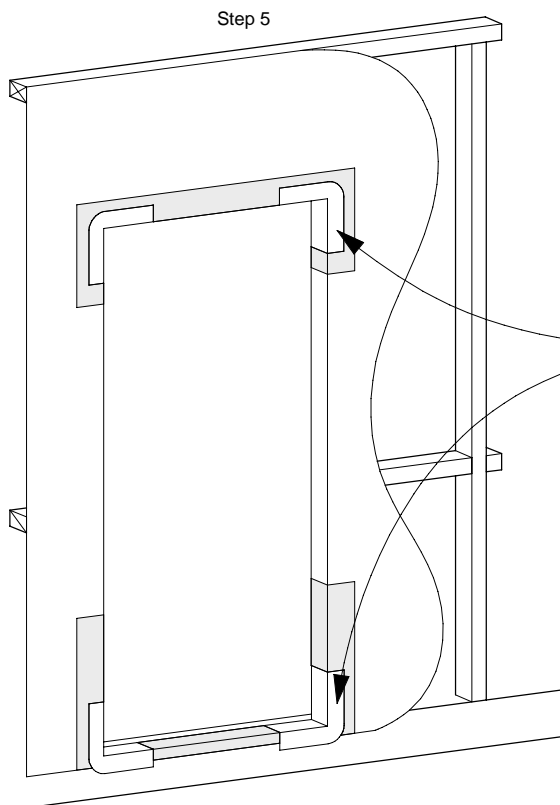


Spray Protecto Tak Primer along sill and head, up both jambs from sill 400mm and down from head (Lintel) 200mm on both jambs.

Note:
Protecto Wrap products are designed to be covered and are therefore not UV stable - cover within four weeks of installation.

Protecto Wrap Specifiers Guide	Door Flashing System Protecto Sill Tape - BT20XL / Detail Tape - JS500 Head Flashing Tape - BT20XL (Installation Steps)	CAD Ref: PW02.2	Sheet : 02.2.5
		Date : April 2005	
		Revision :	

Technical specification subject to change without notice

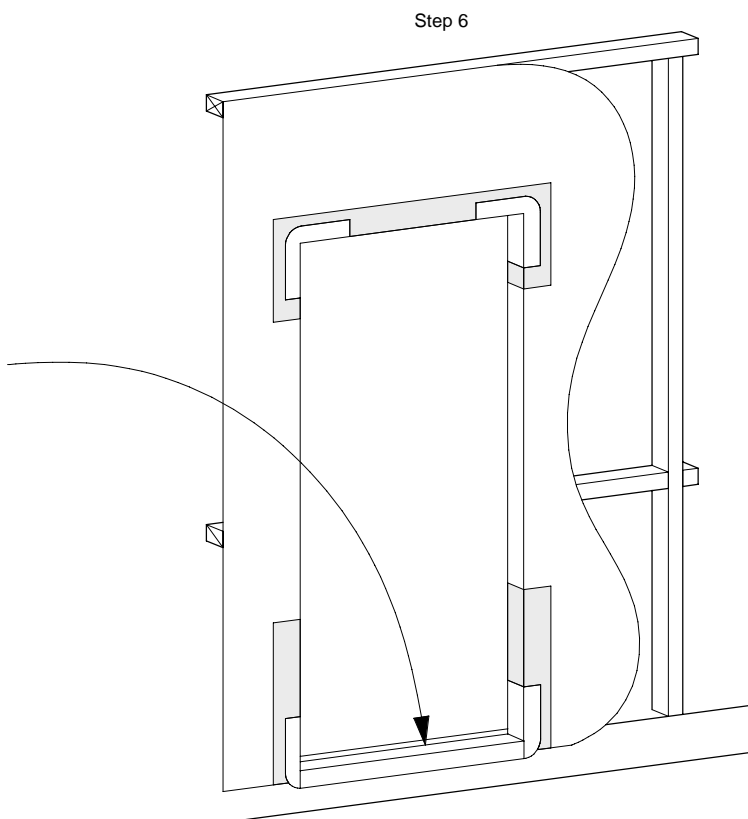


Cut 4/300mm lengths of detail tape - (JS500) (one piece for each corner of opening) Place 150mm of exposed membrane onto the sill and press firmly into the sill/jamb junction then the remaining membrane firmly into position up the jamb. From the corner stretch and apply to outside face. Repeat on all four corners.

Note:
Ensure all exposed timber is covered

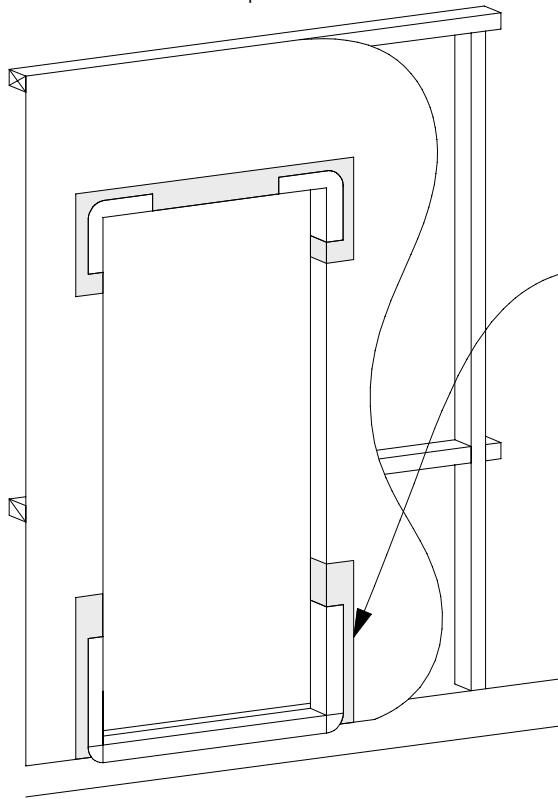
Install 150mm Protecto Sill Tape - (BT20XL) for full length of sill. Ensure tape is fixed flush with inside edge of recess to door opening.

Note:
Protecto Wrap products are designed to be covered and are therefore not UV stable - cover within four weeks of installation.



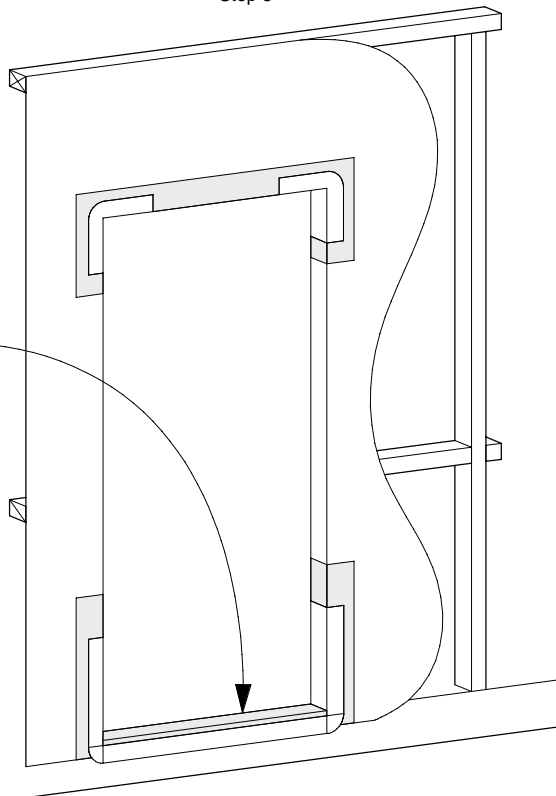
Protecto Wrap Specifiers Guide	Door Flashing System	CAD Ref:	PW02.2	Sheet : 02.2.6
	Protecto Sill Tape - BT20XL / Detail Tape - JS500	Date :	April 2005	
	Protecto Tape - EIFS Tape / Head Flashing Tape - BT20XL	Revision :		
	(Installation Steps)	Technical specification subject to change without notice		

Step 7



Install 150mm Protecto Sill Tape (Bt20XL) to each jamb extending 300mm above recess in floor.
Install tape flush with inside edge of recess.

Step 8

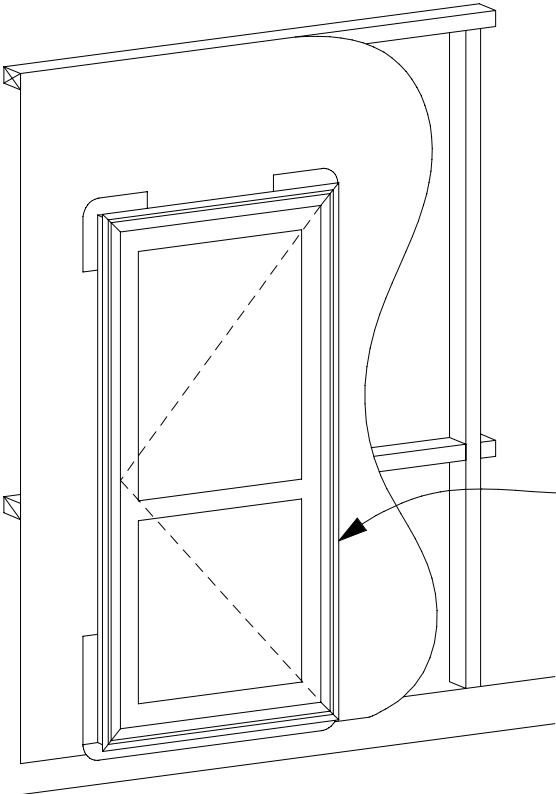


Install Protecto Wrap Premium Energy Sill Sealer full length of sill. Ensure tape is fixed flush with inside edge of floor recess.

Note:
Protecto Wrap products are designed to be covered and are therefore not UV stable - cover within four weeks of installation.

Protecto Wrap Specifiers Guide	Door Flashing System Protecto Sill Tape - BT20XL / Detail Tape - JS500 Head Flashing Tape - BT20XL (Installation Steps) <small>Technical specification subject to change without notice</small>	CAD Ref:	PW02.2	Sheet : 02.2.7
		Date :	April 2005	
		Revision :		

Step 9

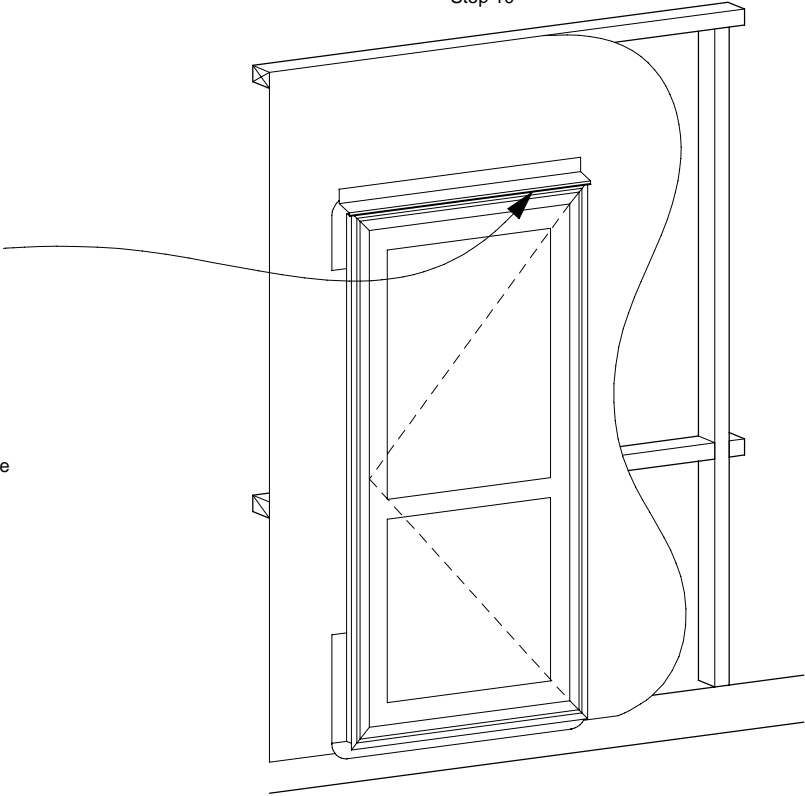


Door unit to be installed
(By other trade)

Head flashing to be installed in
accordance with NZBC E2/AS1
requirements (by other trade)

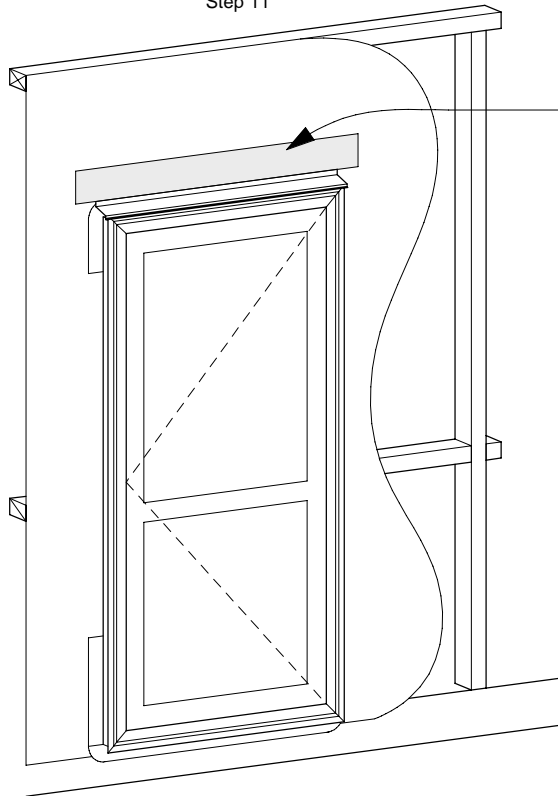
Note:
Protecto Wrap products are designed to be covered and are
therefore not UV stable - cover within four weeks of
installation.

Step 10



Protecto Wrap Specifiers Guide	Door Flashing System	CAD Ref:	PW02.2	Sheet :
	Protecto Sill Tape - BT20XL / Detail Tape - JS500	Date :	April 2005	02.2.8
	Head Flashing Tape - BT20XL	Revision :		
	(Installation Steps)			
	Technical specification subject to change without notice			

Step 11



Apply a layer of Protecto Tak spray on Primer to head flashing.

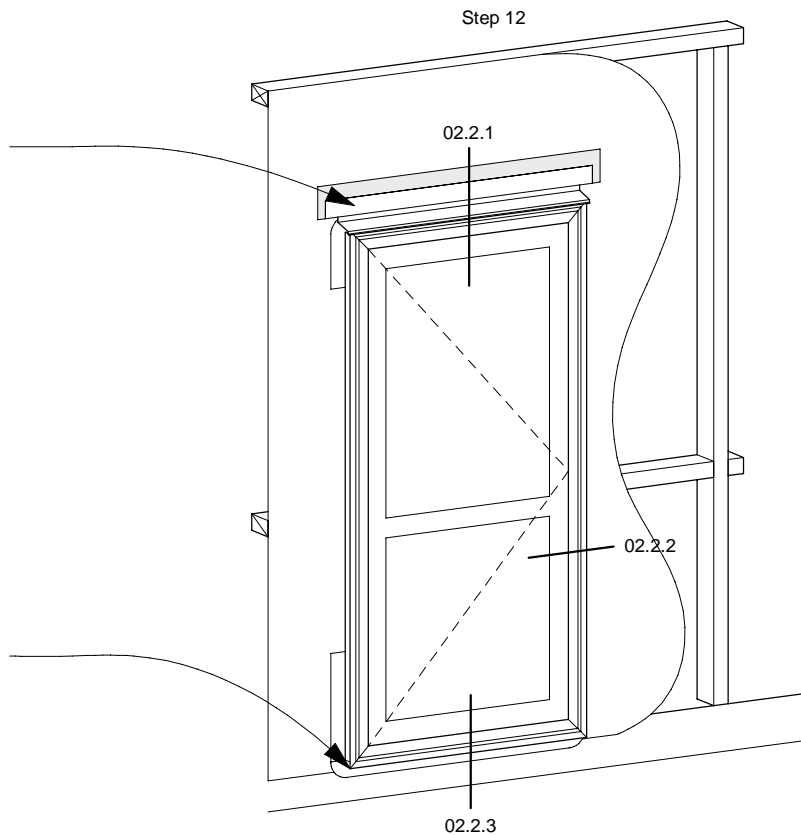
Step 12

Apply 50mm head flashing tape (BT20XL) lapping 25mm with Head flashing and 25mm with building wrap. Extend 50mm beyond each end of Head flashing.

Ready for installation of selected cladding.

Note:
Protecto Wrap products are designed to be covered and are therefore not UV stable - cover within four weeks of installation.

Cut excess Protecto Wrap product to underside of joinery unit with craft knife.



Protecto Wrap Specifiers Guide	Door Flashing System Protecto Sill Tape - BT20XL / Detail Tape - JS500 Head Flashing Tape - BT20XL (Installation Steps) <small>Technical specification subject to change without notice</small>	CAD Ref: PW02.2	Sheet : 02.2.9
		Date : April 2005	
		Revision :	