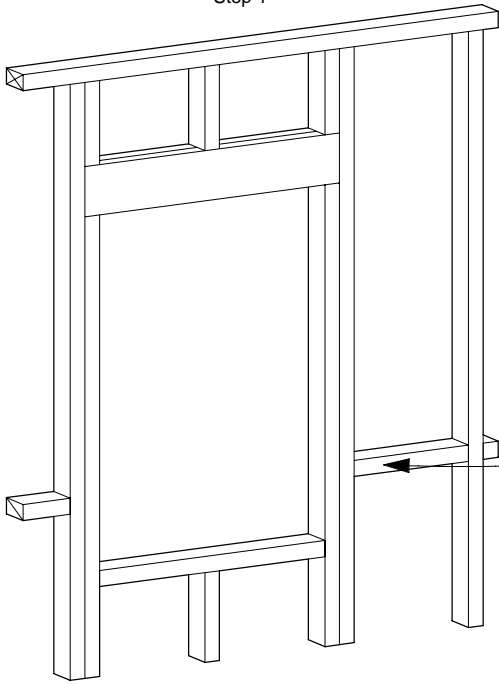
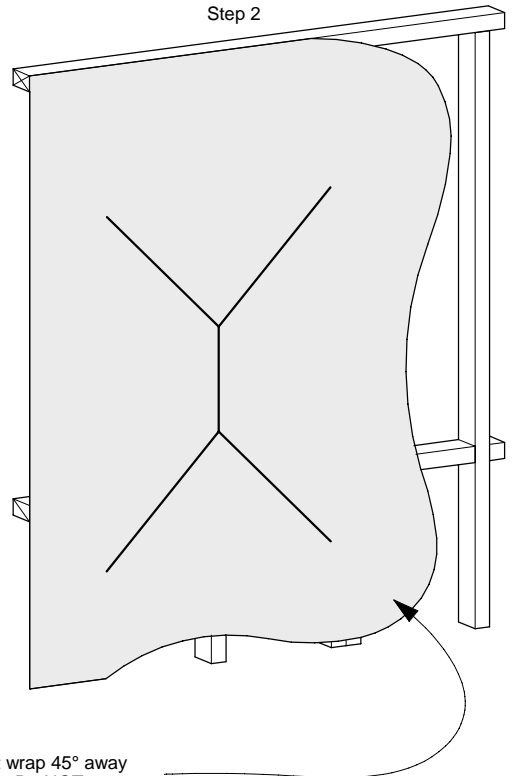


Step 1



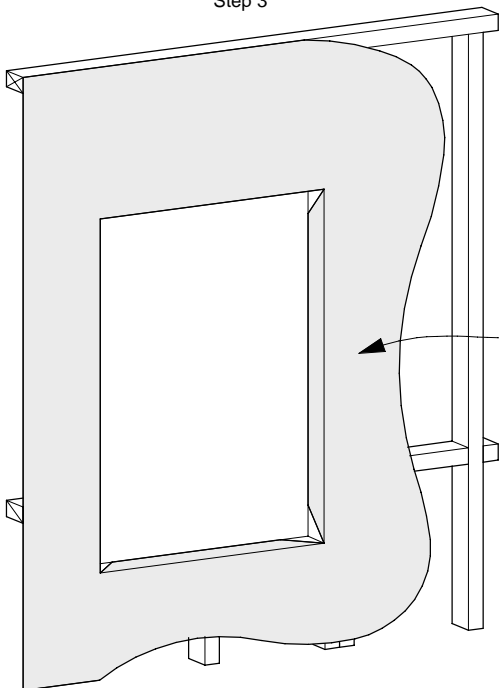
H1.2 Treated timber wall framing

Step 2



Building wrap installed. Cut wrap 45° away from each corner of window. Do NOT cut an "x" shape.

Step 3

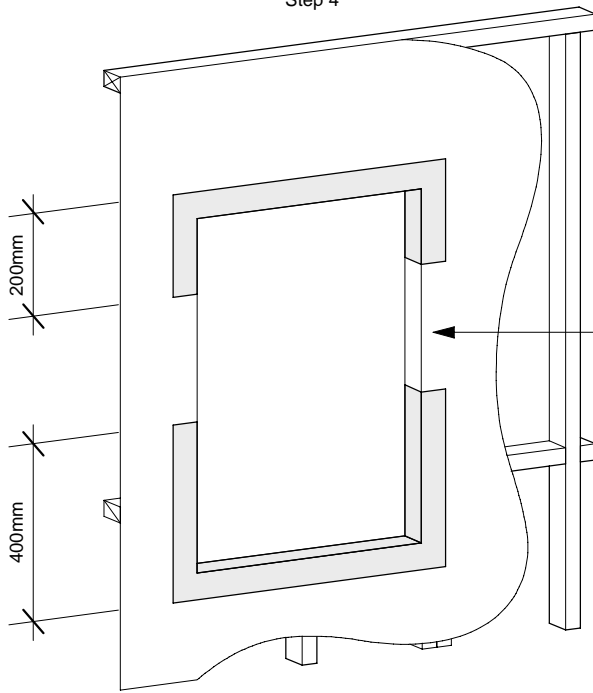


Fold wrap into opening and secure on all sides.

Note:
Protecto Wrap products are designed to be covered and are therefore not UV stable - cover within four weeks of installation.

Protecto Wrap Specifiers Guide	Window Flashing System Protecto Sill Tape - BT20XL / Detail Tape - JS500 Head Flashing Tape - BT20XL (Installation Steps) <small>Technical specification subject to change without notice</small>	CAD Ref: PW02.1	Sheet : 02.1.4
		Date : April 2005	
		Revision :	

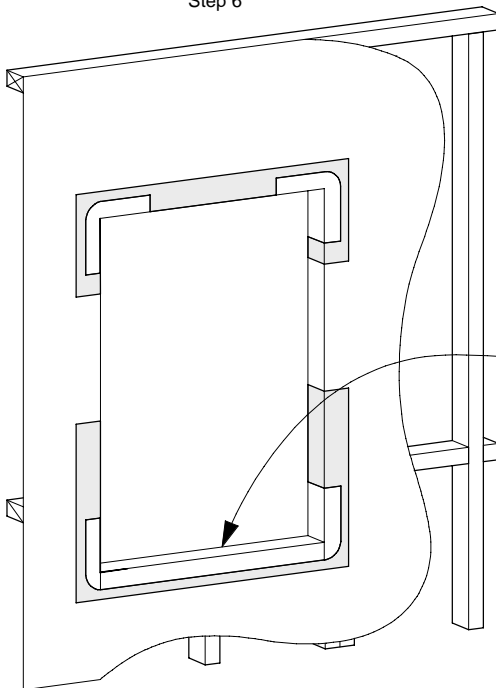
Step 4



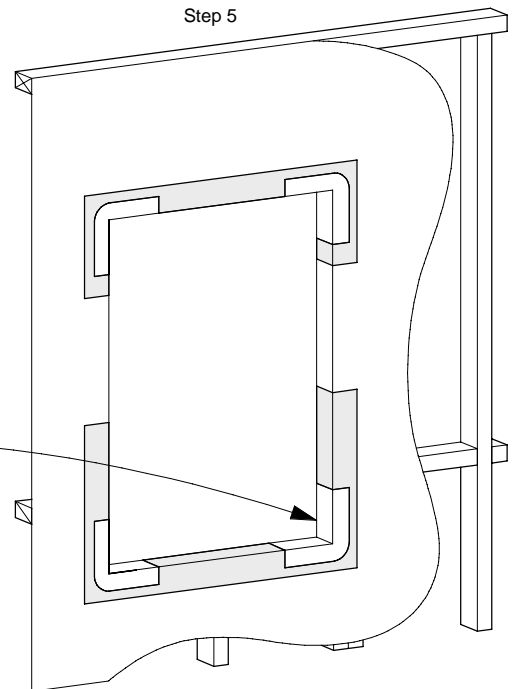
Spray Protecto Tak Primer along sill and head, up both jambs from top to sill plate 400mm and down from head (Lintel) 200mm both jambs.

Cut 4/300mm lengths of detail tape - (JS500) (one piece for each corner of opening) Place 150mm of exposed membrane onto the sill and press firmly into the sill/jamb junction then the remaining membrane firmly into position up the jamb. From the corner stretch and apply to outside face. Repeat on all four corners.

Step 6



Step 5



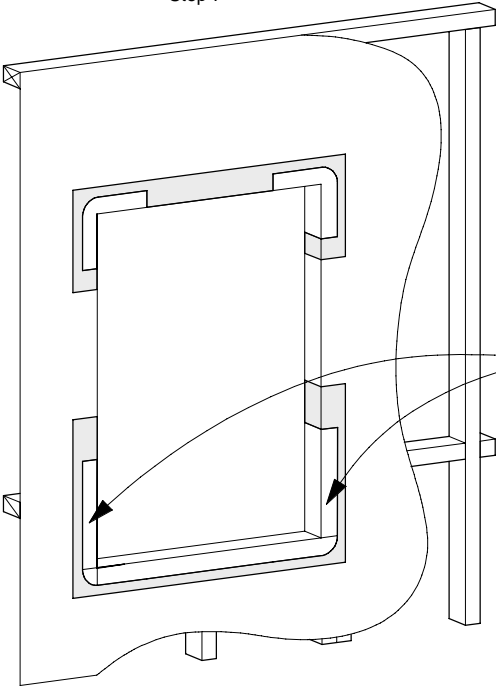
Note:
Ensure all exposed timber is covered.

Install Protecto Sill Tape - (BT20XL) for the full length of sill, ensure tape is fixed flush with inside edge of window opening.

Note:
Protecto Wrap products are designed to be covered and are therefore not UV stable - cover within four weeks of installation.

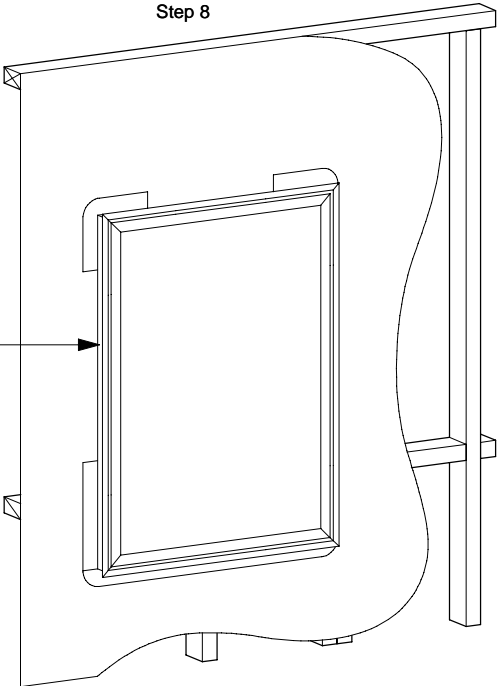
Protecto Wrap Specifiers Guide	Window Flashing System Protecto Sill Tape - BT20XL / Detail Tape - JS500 Head Flashing Tape - BT20XL (Installation Steps) <small>Technical specification subject to change without notice</small>	CAD Ref:	PW02.1	Sheet : 02.1.5
		Date :	April 2005	
		Revision :		

Step 7



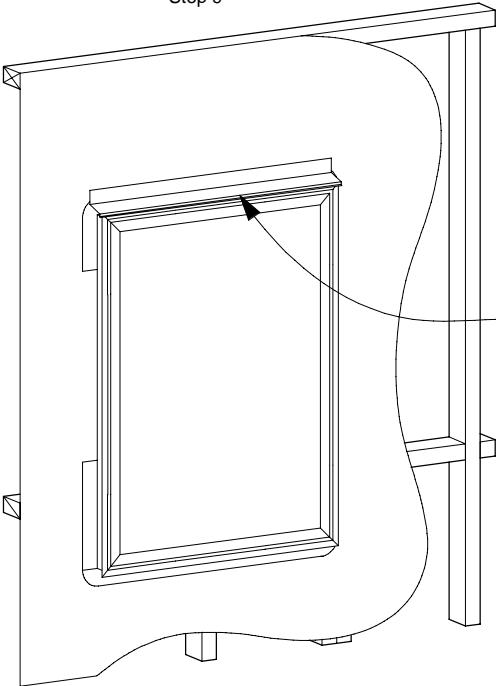
Install Sill Tape (BT20XL) to each jamb extending 300mm above sill plate. Install tape flush with inside edge of window opening.

Step 8



Window to be installed (By other trade)

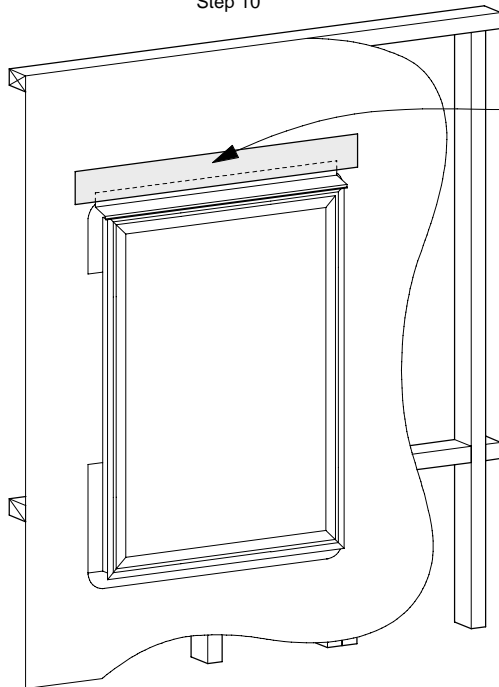
Step 9



Head flashing to be installed in accordance with NZBC E2/AS1 requirements (By other trade)

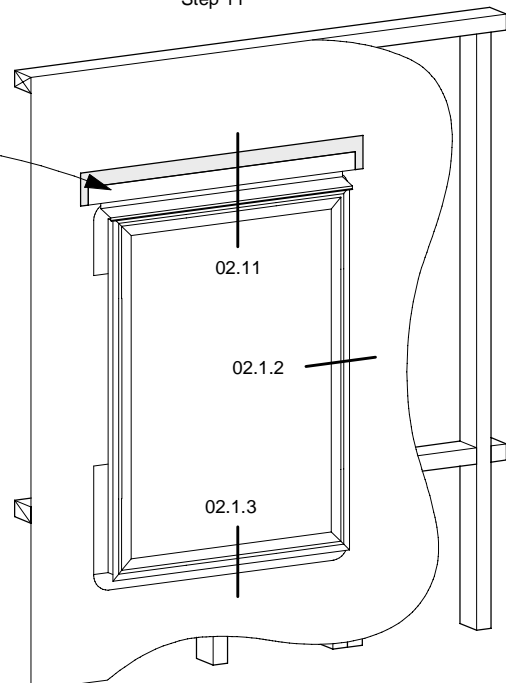
Protecto Wrap Specifiers Guide	Window Flashing System Protecto Sill Tape - BT20XL / Detail Tape - JS500 Head Flashing Tape - BT20XL (Installation Steps) <small>Technical specification subject to change without notice</small>	CAD Ref: PW02.1	Sheet : 02.1.6
		Date : April 2005	
		Revision :	

Step 10



Apply a layer of Protecto Tak spray Primer to head flashing.

Step 11



Apply 50mm head flashing tape - (BT20XL) Lapping 25mm with head flashing and 25mm with building wrap. Extend 50mm beyond each end of the head flashing.

Ready for installation of selected cladding.

Note:
Protecto Wrap products are designed to be covered and are therefore not UV stable - cover within four weeks of installation.

Protecto Wrap Specifiers Guide	Window Flashing System Protecto Sill Tape - BT20XL / Detail Tape - JS500 Head Flashing Tape - BT20XL (Installation Steps) <small>Technical specification subject to change without notice</small>	CAD Ref: PW02.1	Sheet : 02.1.7
		Date : April 2005	
		Revision :	