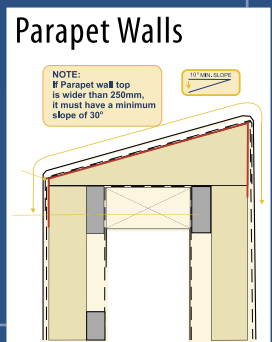
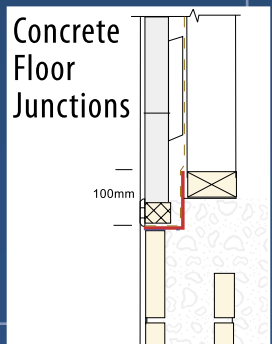
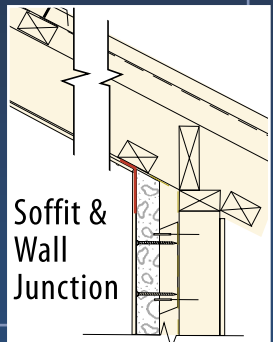


# WATERPROOFING MEMBRANE TAPE



**Marshall**  
Innovations  
Waterproofing Solutions

**15**  
YEAR  
Warranty



# Protecto Tape

The waterproofing membrane tape for exterior protection solutions. Render/plasterable.

**BRANZ Appraised**  
Appraisal No.450 [2005]

## PRIMER TABLE

	Protecto Tak	#100 Primer
Polystyrene	✓	✗
Fibre Cement	✓	✓
Masonry	✗	✓
Steel	✗	✓

Select correct Primer from table.



Apply primer and allow to tack off.



Apply Protecto Wrap Detail Tape where flashing is required.



Remove backing paper and apply Protecto Tape



## Protecto Tak Primer/Adhesive

369gr aerosol.

A spray on primer/adhesive, coloured blue for easy identification.



## #100 Primer Adhesive

Available in 1L, 4L and 20 Litre pails.



## Detail Tape

150mm wide x 15m rolls.

Conformable tape that can be stretched and moulded to any shape.



Cut and fold Protecto Tape to fit.



Apply JS160 Mastic to all overlaps and joins. NB: 100mm overlap required when joining tape.



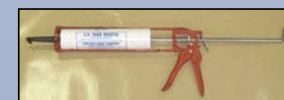
Trowel mastic smooth and press overlaps firmly together.



Press firmly all installed membrane to maximise adhesion.

## Protecto Tape

75mm, 150mm, 300mm, 400mm and 600mm wide rolls x 30m in length. Fabric topped to accept plaster.



## JS160 Mastic

A semi liquid form of the membrane.

## benefits of protecto tape system

- BRANZ APPRAISED Appraisal # 450 (2005)
- FAST AND EASY TO INSTALL
- CAN BE PLASTERED/RENDERED DIRECTLY OVER
- 15 YEAR PRODUCT WARRANTY
- ADAPTABLE TO FIT MOST FLASHING REQUIREMENTS
- ZERO WASTE AS TAPES CAN BE OVERLAPPED

## please note:

- Protecto Tape System must be installed over smooth, clean, dry surfaces only. Treated timber must be allowed to weather for a min. of 7 days prior to the application of primer and membrane.
- Protecto Tak primer must be used on Polystyrene and Fibre Cement sheeting before installation. Ensure nail holes are filled and allowed to dry for a minimum of 24 hours prior to priming.
- Protecto Wrap #100 primer must be used on Concrete and steel before installation.
- Protecto Tape is not UV stable and must be covered within 28 days of installation, or be replaced.
- When installing a metal cap flashing over Protecto Tape, you must use a 5mm packer under the flashing to stop the metal contacting with the membrane.
- When rendering or plastering over Protecto Tape, you must bed in a fibreglass mesh coat extending a minimum of 100mm past all edges of the Protecto Tape.
- Sealants must not make contact with Protecto Tape. Always use a bond breaking tape or backer rod behind sealants.

## other professional solutions by Marshall Innovations

- Protecto Sill System – Window and door protection, BRANZ Appraisal # 444 (2005).
- Anti Fracture Membrane (AFM) – crack suppression and waterproofing for under tiles. Interior BRANZ Appraisal # 461 (2005).
- Protecto Wall – Tanking and below ground applications, BRANZ Appraisal # 517 (2006).
- Pro-Joist - Cantilevered deck joist protection, BRANZ Appraisal #497 (2006).
- Pro-Drain 8 - The protection board that creates a neutral pressure zone between the foundation wall and subsoil.
- Tekton House Wrap - Building wrap of the future, BRANZ Appraisal # 548 (2007).

April 2012